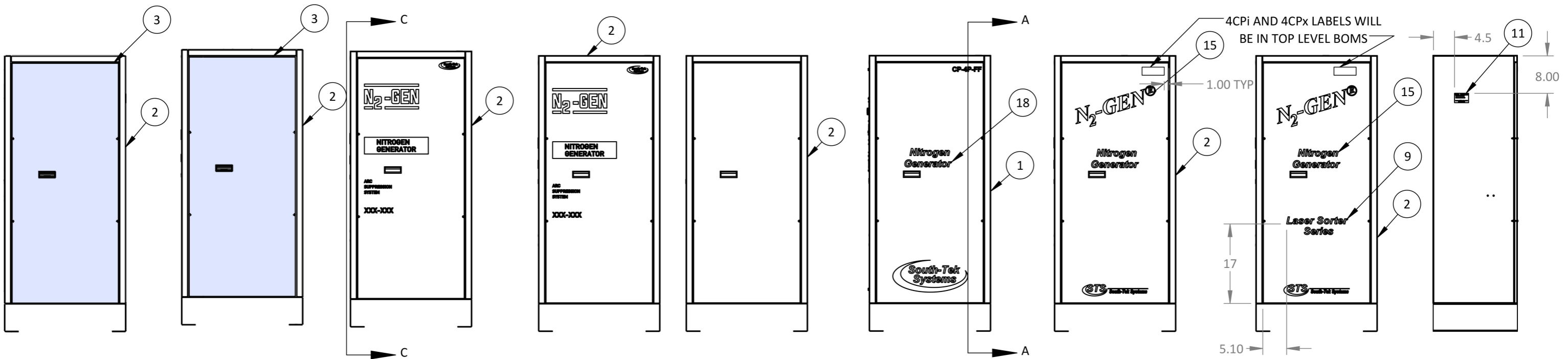
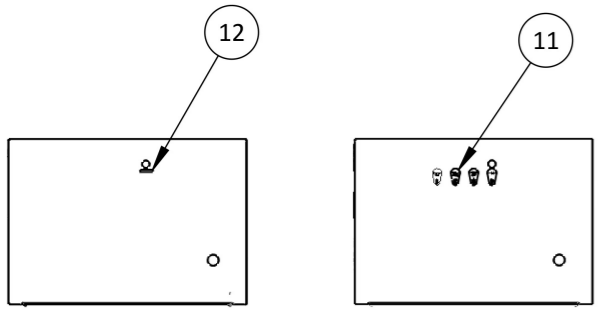


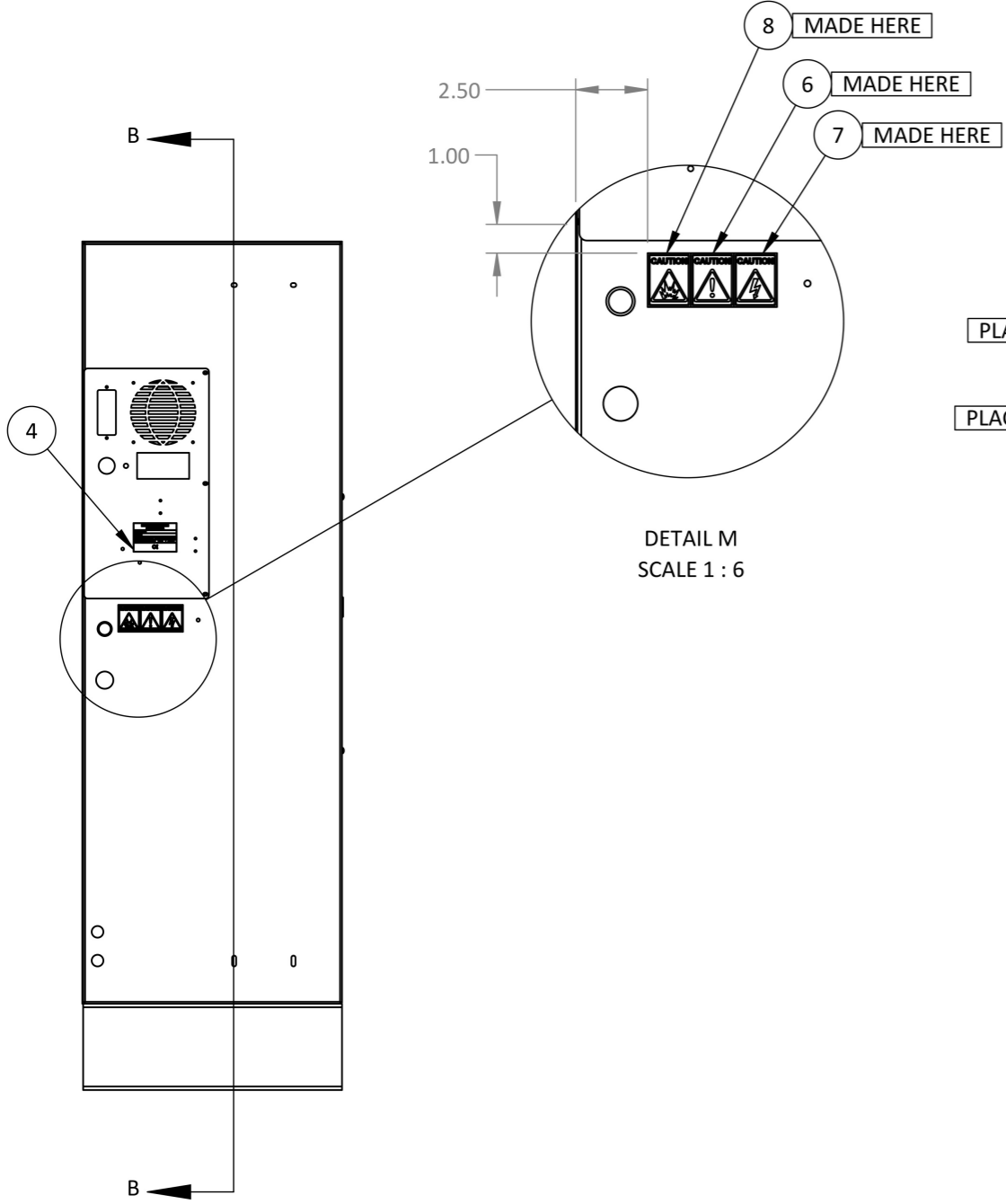
TYP4P-06-XXX-XXXX, TYP4P, MASTER CABINET ASSEMBLY - Rev. 8

ITEM #	STS PART #	DESCRIPTION	TYP4P-06-BB-14KPH-R1 /QTY.	TYP4P-06-NP-14KPH-R1 /QTY.	TYP4P-06-TL-1050-R1 /QTY.	TYP4P-06-4CP-LS-R1 /QTY.	TYP4P-06-4CP-WH-R1 /QTY.	TYP4P-06-4CP-GR-R1 /QTY.	TYP4P-06-TL-1825-R1 /QTY.	TYP4P-06-FPS-CE-R1 /QTY.	TYP4P-06-FPS-R1 /QTY.
1	002-264	0.875" PUSH-IN METAL PLUG	1	1	1	1	1	1	1	1	1
2	002-301-WH	TYP4P, CABINET FABRICATION	1	1	1	1	1	-	1	-	-
2	002-301-GR	TYP4P, CABINET FABRICATION	-	-	-	-	-	1	-	-	-
2	002-301-RD	TYP4P, CABINET FABRICATION	-	-	-	-	-	-	-	1	1
3	004-557	BB 14KPH FRONT COVER LABEL	1	1	-	-	-	-	-	-	-
4	005-278-A	CE SERIAL NUMBER LABEL, NON TANK	-	-	-	-	-	-	-	1	-
5	005-295	GROUND SYMBOL LABEL	-	-	-	-	-	-	-	2	-
6	005-341	CAUTION LABEL (MADE HERE)	-	-	-	-	-	-	-	1	-
7	005-342	CAUTION LABEL (MADE HERE)	-	-	-	-	-	-	-	1	-
8	005-343	ARC FLASH CAUTION LABEL (MADE HERE)	-	-	-	-	-	-	-	1	-
9	005-431-WH	LASER SORTER SERIES LABEL	-	-	-	1	-	-	-	-	-
10	124-302	SERIAL NUMBER LABEL	1	1	1	1	1	1	1	1	1
11	124-909-BP	BEERBLAST 14KPH LABEL SET	1	-	-	-	-	-	-	-	-
12	124-909-NP	N2-GEN 14KPH Label Set	-	1	-	-	-	-	-	-	-
13	685-910-H	TL-1050 LABEL SET	-	-	1	-	-	-	-	-	-
14	685-910-I	TL-1825 LABEL SET	-	-	-	-	-	-	1	-	-
15	TYP4P-4CP-LS-GR	4CP MODELS SHARED LABEL SET	-	-	-	-	1	-	-	-	-
15	TYP4P-4CP-LS-WH	4CP MODELS SHARED LABEL SET	-	-	-	1	-	1	-	-	-



SEE DRAWING ASSEMBLY 124-909-NP FOR LABEL PLACEMENT SEE DRAWING ASSEMBLY 124-909-BP FOR LABEL PLACEMENT SEE DRAWING ASSEMBLY 685-910-H FOR LABEL PLACEMENT SEE DRAWING ASSEMBLY 685-910-I FOR LABEL PLACEMENT SEE DRAWING ASSEMBLY TYP4P-FPS-LS FOR LABEL PLACEMENT SEE DRAWING ASSEMBLY 124-907-CP-4P-FF FOR LABEL PLACEMENT SEE DRAWING ASSEMBLY TYP4P-4CPI-LS FOR LABEL PLACEMENT SEE DRAWING ASSEMBLY TYP4P-4CPI-LS FOR LABEL PLACEMENT SECTION A-A

TYP4P-06-XXX-XXXX, TYP4P, MASTER CABINET ASSEMBLY (2) - Rev. 8

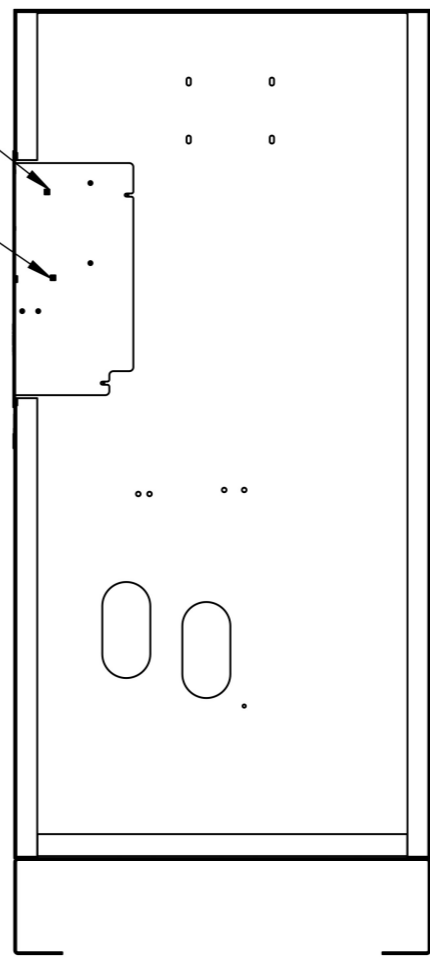


PLACE NEXT TO GROUND BLOCK

PLACE NEXT TO TERMINAL BLOCK

5

5



1

