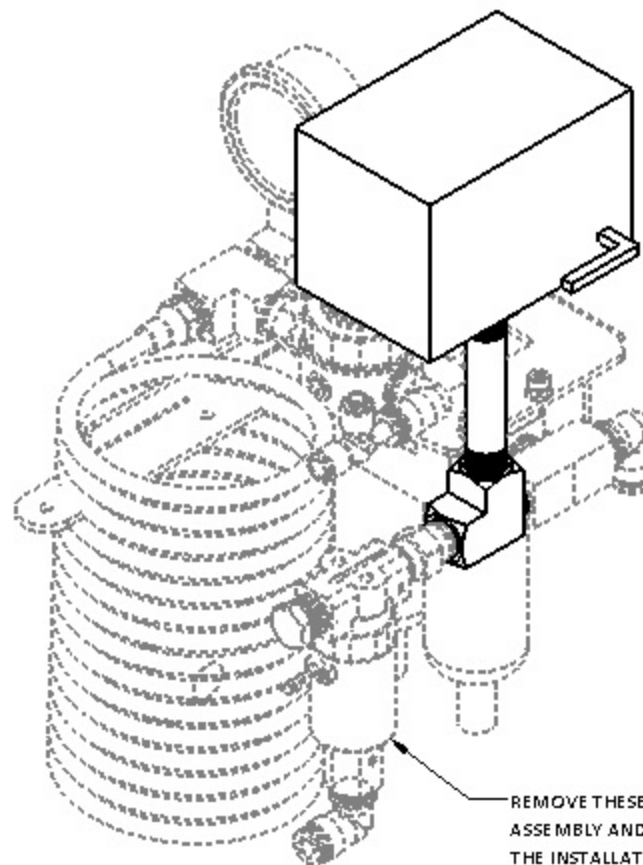
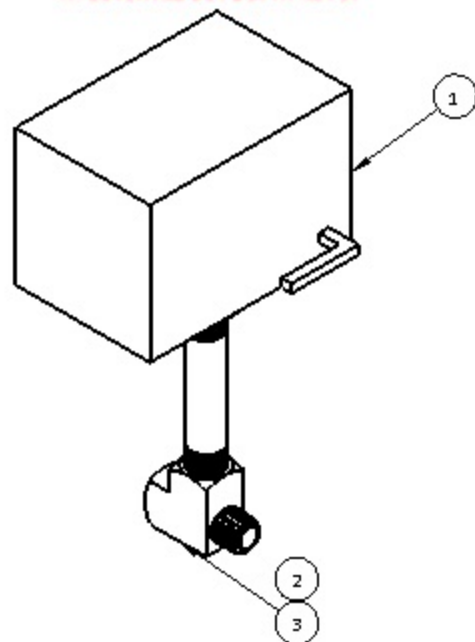


# B20-A-002i, TYP4P, EWS ASSEMBLY - Rev. 1

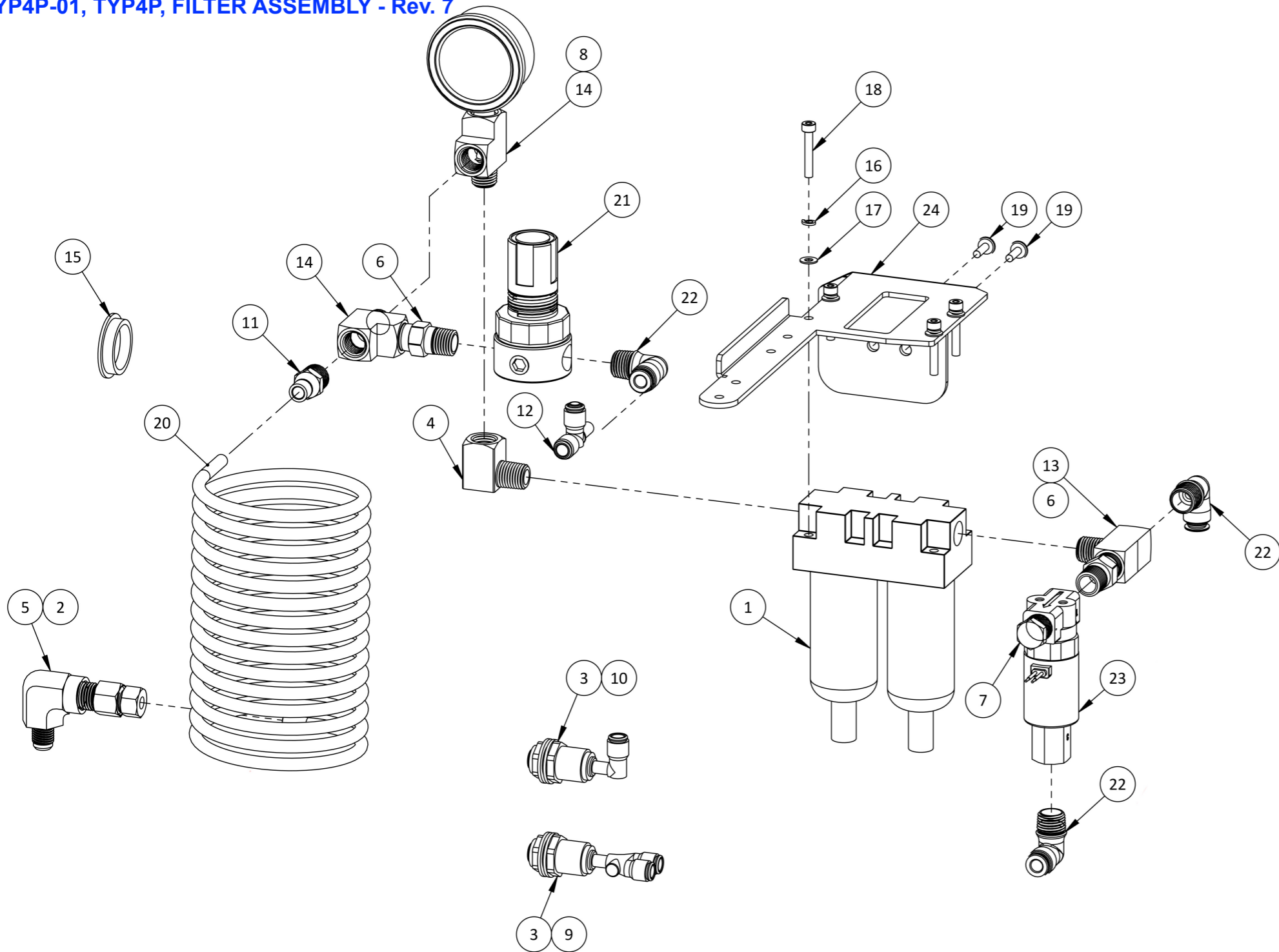
B20-A-002i-SERVICE, TYP4P, EQUIPMENT ALARM INSTRUMENTATION ASSEMBLY, 01			
ITEM #	STS PART #	DESCRIPTION	QTY.
1	002-340	0.250" NPT PRESSURE SWITCH, 5-150 PSI, DELTA 30-40 PSI	1
2	001-106	0.250 NPT X 03.000 L NIPPLE, BRASS	1
3	124-380	0.250 NPT STREET TEE, BRASS	1

SET PRESSURE SWITCH TO CUT IN  
AT 30 PSI AND CUT OUT AT 60 PSI

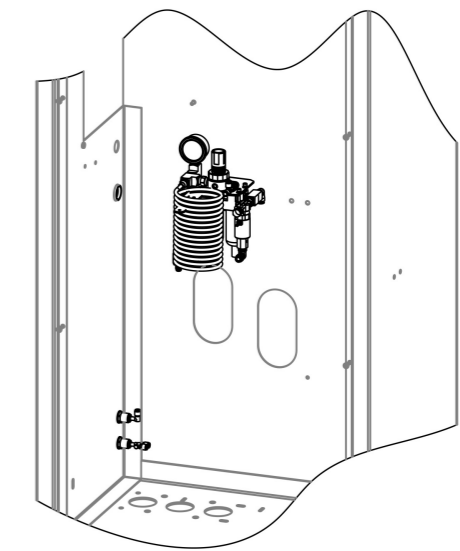


REMOVE THESE COMPONENTS FROM FILTER  
ASSEMBLY AND REINSTALL AS SHOWN AFTER  
THE INSTALLATION OF ALARM PARTS

**TYP4P-01, TYP4P, FILTER ASSEMBLY - Rev. 7**



ITEM #	NUMBER	DESCRIPTION	QTY.
1	100704	S-100/200 FILTER COMBO	1
2	101102	0.250 NPT M X 0.250 COMPRESSION STRAIGHT	1
3	101193	0.250 OD PTC THROUGH-WALL COUPLING	2
4	101271	0.250 NPT STREET ELBOW, BRASS	1
5	101273	0.250 JIC M X 0.250 NPT F ELBOW	1
6	101687	0.250 NPT HEX NIPPLE, BRASS	2
7	101903	0.250 HEX PLUG, BRASS	1
8	101945	0.250 NPT X 02.000 0-160 PSIG, BM	1
9	102054	0.250 OD STEM WYE	1
10	102055	0.250 STEM X 0.250 OD PTC ELBOW	1
11	102066	0.250 NPT X 0.250 OD PTC STRAIGHT	1
12	102079	0.250 STEM TEE	1
13	102283	0.250 NPT F X 0.250 NPT M X 0.250 NPT F BRANCH TEE, BRASS	1
14	102313	0.250 NPT STREET TEE, BRASS	2
15	102567	01.1250" X 01.3125" PUSH-IN METAL PLUG	1
16	102603	M4 LOCK WASHER	4
17	102686	M4 FLAT WASHER	4
18	102793	M4 X 25MM SOCKET HEAD CAP SCREW	4
19	102799	10-32 X 0.500" PPHMS, ZINC	2
20	103063	0.250 OD TUBING COILED, PER INCH	206
21	103107	0.250 NPT PRESSURE RELIEF VALVE	1
22	105917	0.250 NPT X 0.250 OD PTC SWIVEL ELBOW	3
23	106513	0.250" 3PV, 24VDC	1
24	106682	FILTER MOUNT AND COIL SUPPORT	1



SCALE 1 : 14