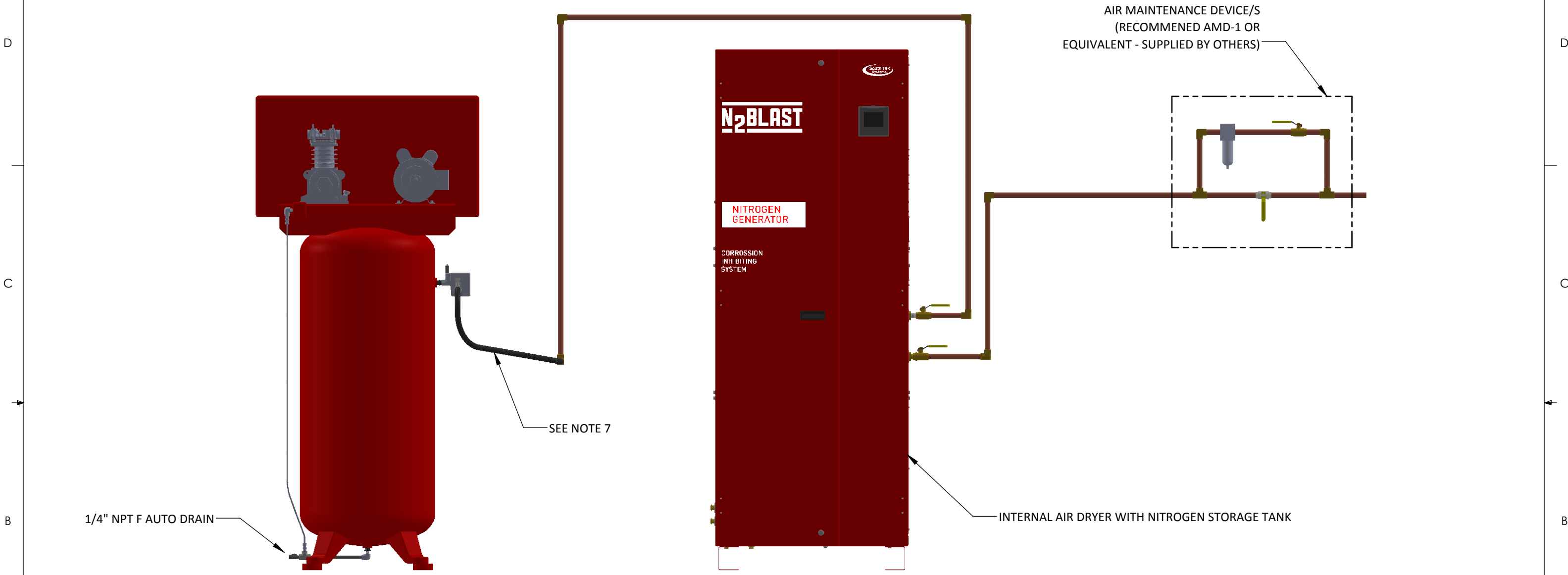
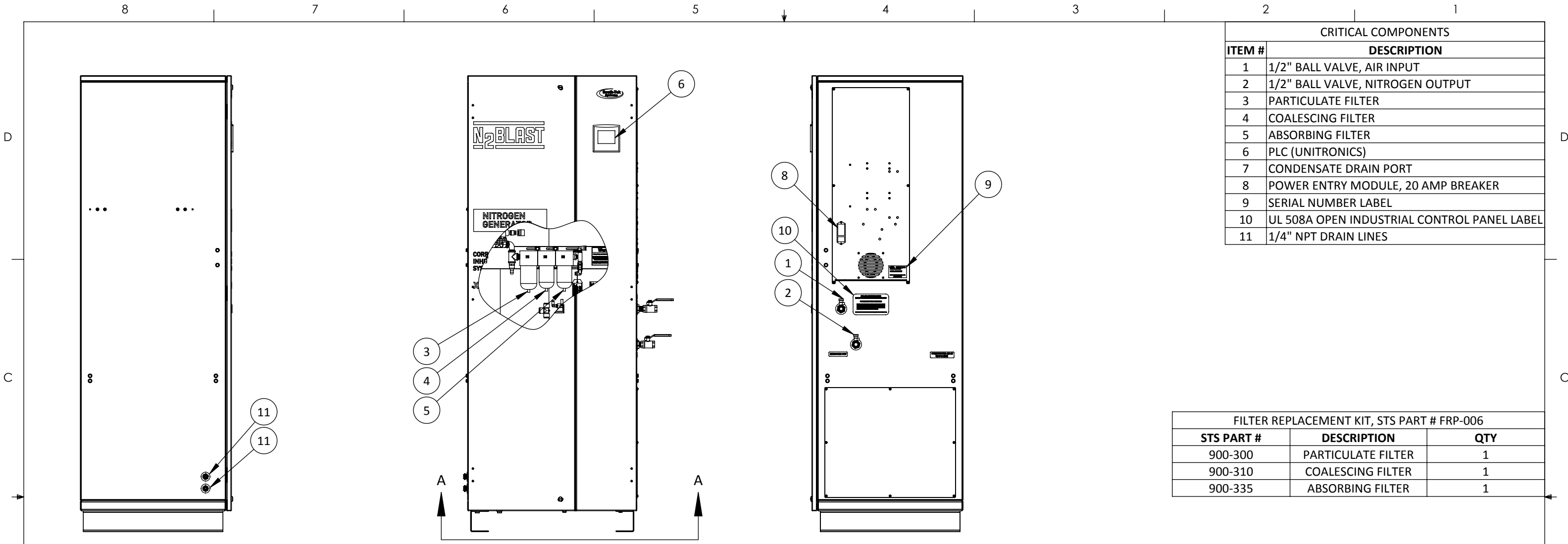


N₂-BLAST WITH AUTOMATIC AIR BYPASS



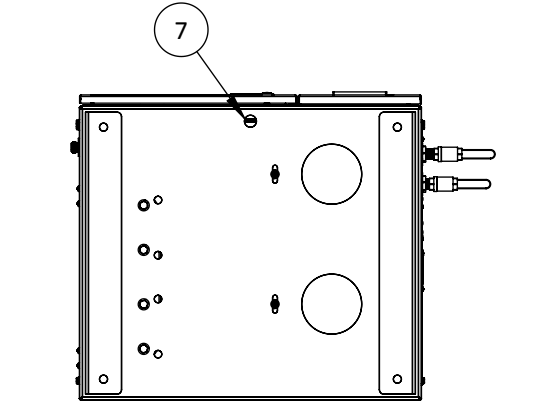
- GENERAL NOTES:**
- (1) ALL COMPONENTS WITHIN THIS DRAWING ARE FOR ILLUSTRATION PURPOSES ONLY. FOR MORE INFORMATION ABOUT COMPRESSOR, DRYER AND NITROGEN GENERATOR REFER TO DRAWINGS; DD-AC-CS (COMPRESSOR), DD-RD-SC-25 (DRYER) AND DD-TYP5P-FPS (N2 GENERATOR).
 - (2) REFER TO THE MANUFACTURER'S MANUAL FOR ANCHORING REQUIREMENTS OF THE COMPRESSOR.
 - (3) AIR DRYER IS INTERNALLY PLUMBED AND PIPED INSIDE THE N2 GENERATOR.
 - (4) ALL CONNECTIONS ARE 1/2" NPT F UNLESS OTHERWISE SPECIFIED.
 - (5) ALL PIPING, FITTINGS, VALVES, AND HARDWARE BETWEEN COMPONENTS ARE SUPPLIED BY OTHERS.
 - (6) AIR COMPRESSOR AND N2 GENERATOR MUST BE INSTALLED ON A HARD FLAT SURFACE.
 - (7) SOUTH-TEK RECOMMENDS TO INSTALL 24" OF 1/2" ID FLEX TUBING RATED FOR 200 PSIG / 135 F (MINIMUM) TO REDUCE VIBRATION FROM COMPRESSOR TO HARD PIPING (OPTIONAL PART # "002-310")

						MATERIAL: TYPE 5, GENERAL ARRANGEMENT WITH (CS) VERTICAL COMPRESSOR		DRAWN: SRG	APPROVED: MRT	
01	10320	-	INPUT AND OUTPUT LOCATIONS HAVE CHANGED	03/13/18	PJS	MRT	FINISH:		DATE: 09/07/17	DATE: 03/13/18
00	-	-	RELEASE FOR USE IN SALES PACKAGES	08/24/17	SRG	MRT	WEIGHT:		SCALE: 1:14	SHEET: 1 OF 1
REV	TASK#	SHEET	DESCRIPTION	DATE	DRAWN	APPR.	PROJECT NAME: GENERAL ARRANGEMENT		SIZE: B	REVISION: 01
REVISIONS: ONLY THE LATEST 3 REVISIONS WILL BE SHOWN. OLDER REVISIONS CONSOLIDATED AND FILED.						PROPRIETARY AND CONFIDENTIAL THE INFORMATION CONTAINED IN THIS DRAWING IS THE SOLE PROPERTY OF SOUTH-TEK SYSTEMS. ANY REPRODUCTION IN PART OR AS A WHOLE WITHOUT THE WRITTEN PERMISSION OF SOUTH-TEK SYSTEMS IS PROHIBITED.		UNLESS OTHERWISE SPECIFIED DIMENSIONS ARE IN INCHES		NUMBER: GA-TYP5P-FPS
						ANGLES				
						±.5°		X. ±1		
						.X ±.2		.XX ±.03		
						.XXX ±.005		X/X<10' ±1/16		
						X/X>10' ±1/8				



CRITICAL COMPONENTS	
ITEM #	DESCRIPTION
1	1/2" BALL VALVE, AIR INPUT
2	1/2" BALL VALVE, NITROGEN OUTPUT
3	PARTICULATE FILTER
4	COALESCING FILTER
5	ABSORBING FILTER
6	PLC (UNITRONICS)
7	CONDENSATE DRAIN PORT
8	POWER ENTRY MODULE, 20 AMP BREAKER
9	SERIAL NUMBER LABEL
10	UL 508A OPEN INDUSTRIAL CONTROL PANEL LABEL
11	1/4" NPT DRAIN LINES

FILTER REPLACEMENT KIT, STS PART # FRP-006		
STS PART #	DESCRIPTION	QTY
900-300	PARTICULATE FILTER	1
900-310	COALESCING FILTER	1
900-335	ABSORBING FILTER	1



SECTION A-A

DESIGN DATA FOR N2-BLAST TYPE 5 SYSTEMS			
GENERATOR	FPS-10000	FPS-16500	FPS-22500
PURITY	98% +		
AIR REQUIREMENT	13 SCFM @ 125 PSI	17 SCFM @ 125 PSI	22 SCFM @ 125 PSI
N2 OUT PRESSURE	60-120 PSIG		
SHIPPING WEIGHT	870 LB	1020 LB	1070 LB
ELECTRICAL	110V / 50-60HZ / 1PHASE, <5 AMPS		

REV	TASK#	SHEET	DESCRIPTION	DATE	DRAWN	APPR.
-	-	-	-	-	-	-
01	10320	-	ADDED FILTER DRAIN PORTS	03/12/18	PJS	MRT
00	-	-	RELEASE FOR SALES	08/30/17	SRG	MRT

South-Tek Systems

PROPRIETARY AND CONFIDENTIAL
THE INFORMATION CONTAINED IN THIS DRAWING IS THE SOLE PROPERTY OF SOUTH-TEK SYSTEMS. ANY REPRODUCTION IN PART OR AS A WHOLE WITHOUT THE WRITTEN PERMISSION OF SOUTH-TEK SYSTEMS IS PROHIBITED.

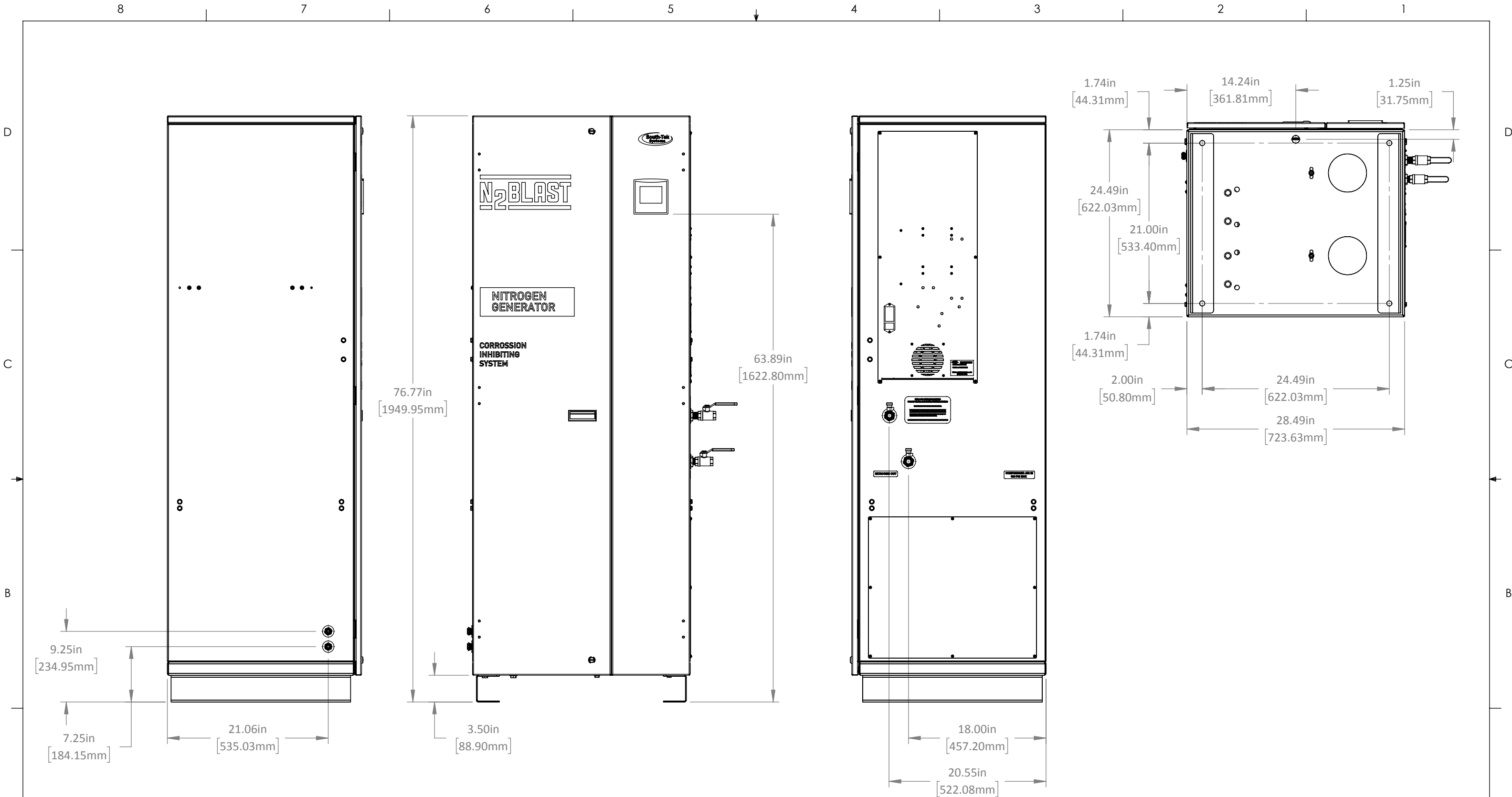
MATERIAL: _____
FINISH: _____
WEIGHT: _____ PROJECT NAME: _____
DETAIL DRAWING NUMBER: _____

TYP5P DESIGN DATA AND DIMENSIONS

DD-TYP5P-FPS

DRAWN: MRT	APPROVED: MRT
DATE: 09/15/17	DATE: 03/13/18
SCALE: 1:16	SHEET: 1 OF 2
REVISION: 01	

REVISIONS: ONLY THE LATEST 3 REVISIONS WILL BE SHOWN. OLDER REVISIONS CONSOLIDATED AND FILED.



REV	TASK#	SHEET	DESCRIPTION	DATE	DRAWN	APPR.
-	-	-	-	-	-	-
01	10320	-	ADDED FILTER DRAIN PORTS	03/12/18	PJS	MRT
00	-	-	RELEASE FOR SALES	08/30/17	SRG	MRT

REVISIONS: ONLY THE LATEST 3 REVISIONS WILL BE SHOWN. OLDER REVISIONS CONSOLIDATED AND FILED.

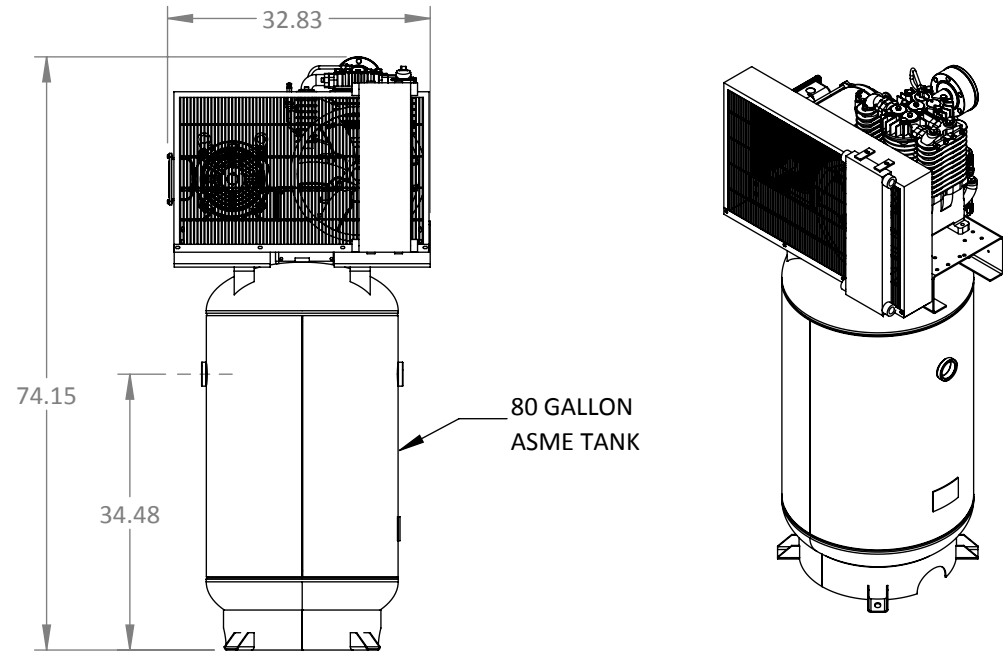
South-Tek Systems

PROPRIETARY AND CONFIDENTIAL
THE INFORMATION CONTAINED IN THIS DRAWING IS THE SOLE PROPERTY OF SOUTH-TEK SYSTEMS. ANY REPRODUCTION IN PART OR AS A WHOLE WITHOUT THE WRITTEN PERMISSION OF SOUTH-TEK SYSTEMS IS PROHIBITED.

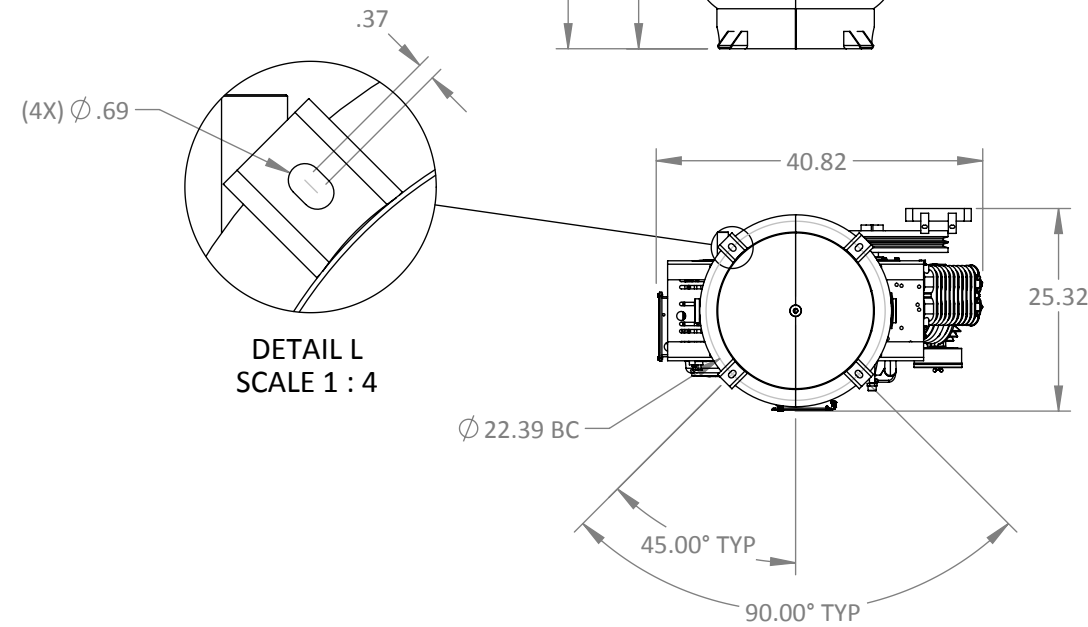
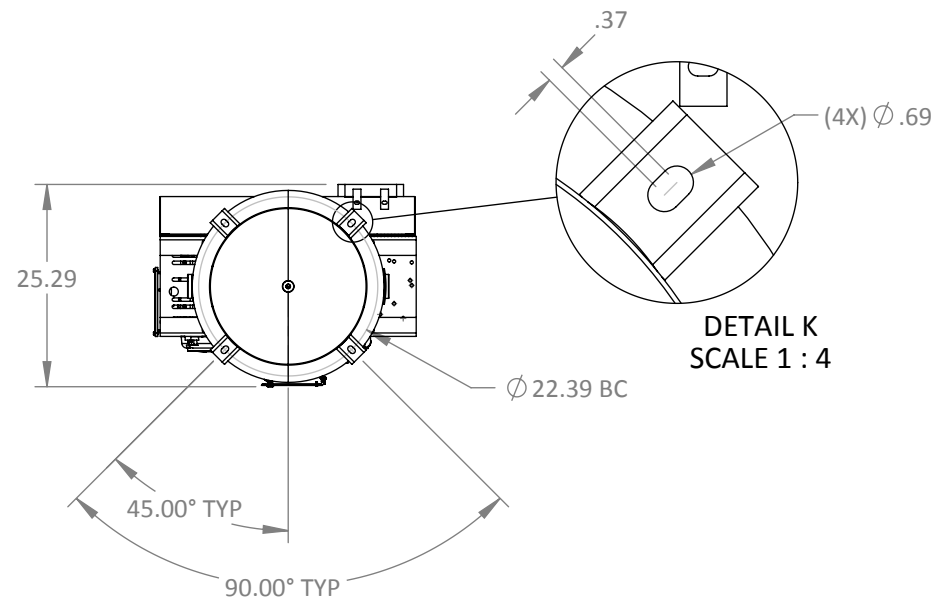
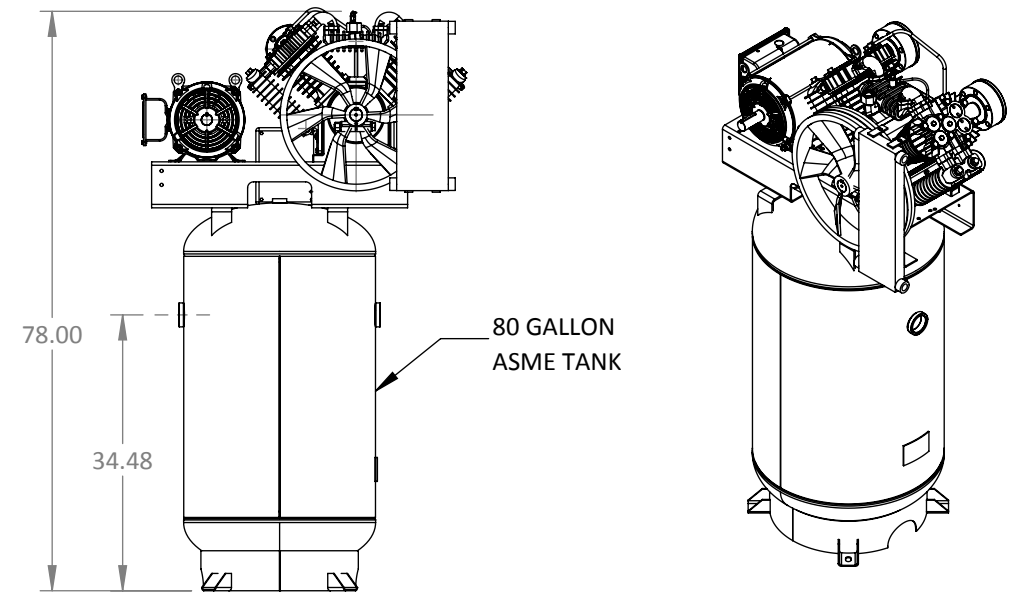
MATERIAL:						
FINISH:						
WEIGHT:			PROJECT NAME:			
UNLESS OTHERWISE SPECIFIED DIMENSIONS ARE IN INCHES						
ANGLES	X.	.X	.XX	.XXX	X/X<10'	X/X>10'
±.5°	±1	±.2	±.03	±.005	±1/16	±1/8

TYP5P DESIGN DATA AND DIMENSIONS			DRAWN: MRT	APPROVED: MRT
			DATE: 09/15/17	DATE: 03/13/18
WEIGHT:		PROJECT NAME: DETAIL DRAWING		SIZE: B
NUMBER: DD-TYP5P-FPS			SCALE: 1:12	SHEET: 2 OF 2
				REVISION: 01

STS-NF-C-5-CS



STS-NF-C-7-CS AND STS-NF-C-7HD-CS



**80 GALLON VERTICAL ASME TANK
ELITE W/ COOLER (MAG STARTER, AUTO TANK
DRAIN, LOW OIL MONITOR, VIBRATION PADS)
1/4" NPT AUTO-DRAIN CONNECTION PORT
LOCATED NEAR BOTTOM OF THE TANK. PIPE
TO SITE DRAIN.**

STS PART # (XXX) = VOLTAGE	CUSTOMER #	MOTOR (HP)	AIR FLOW (SCFM @175)	DIMENSIONS (L" X W" X H")	WEIGHT (LBS)	ELECTRICAL OPTIONS / AMPS	1 YEAR SERVICE KIT #	2 YEAR SERVICE KIT #
CS-050-(XXX)-16	STS-NF-C-5-CS	5	17.5	33 X 26 X 74	685	208-230V/1PH/24A	CS-050-075-KIT1	CS-050-KIT2
CS-050-(XXX)-36						230-460V/3PH/(16A-8A)		
CS-075-(XXX)-36	STS-NC-C-7-CS	7.5	24	41 X 26 X 78	885 lbs	230-460V/3PH/(18A-9A)	CS-075HD-100-KIT1	CS-075-KIT2
CS-075HD-(XXX)-36	STS-NF-C-7HD-CS		28			230-460V/3PH/(18A-9A)		CS-075HD-KIT2
CS-100-(XXX)-36	STS-NF-C-10-CS		35			230-460V/3PH/(28A-14A)		CS-100-KIT3



**(CS) VERTICAL COMPRESSOR DESIGN
DATA AND DIMENSIONS**

DRAWN: JVN
APPROVED: JVN
DATE: 01/12/18
DATE: 01/12/18

MATERIAL:
FINISH:
WEIGHT:
PROJECT NAME:

SIZE: B
SCALE: 1:24
SHEET: 1 OF 1

PROPRIETARY AND CONFIDENTIAL
THE INFORMATION CONTAINED IN THIS DRAWING IS THE SOLE
PROPERTY OF SOUTH-TEK SYSTEMS. ANY REPRODUCTION IN
PART OR AS A WHOLE WITHOUT THE WRITTEN PERMISSION
OF SOUTH-TEK SYSTEMS IS PROHIBITED.

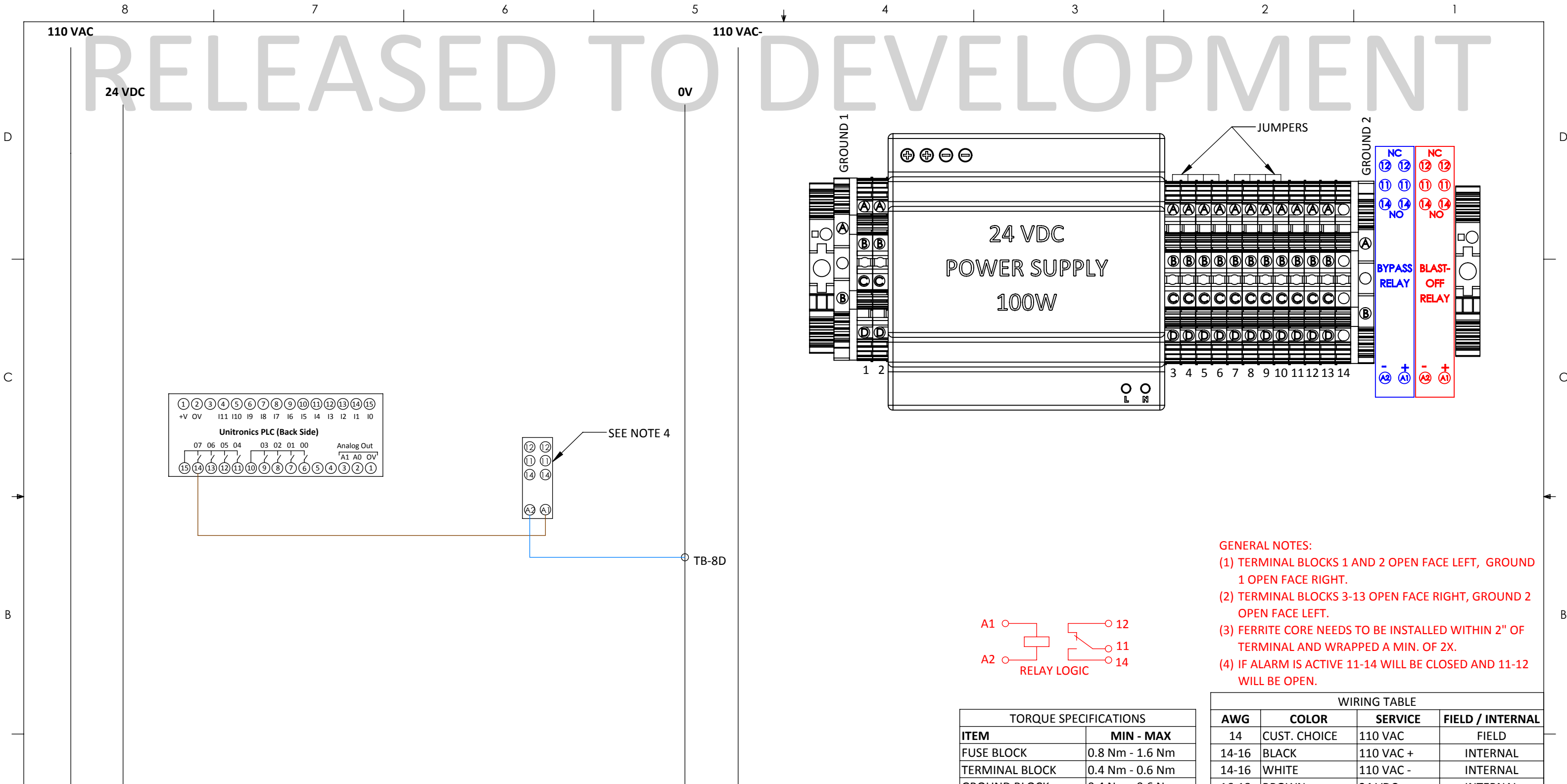
ANGLES	X.	.X	.XX	.XXX	X/X<10'	X/X>10'
±.5°	±1	±.2	±.03	±.005	±1/16	±1/8

NUMBER: **DD-AC-CS**
REVISION: **00**

REV	TASK#	SHEET	DESCRIPTION	DATE	DRAWN	APPR.
-	-	-	-	-	-	-
0	-	-	RELEASED	1/11/18	JVN	JVN

REVISIONS: ONLY THE LATEST 3 REVISIONS WILL BE SHOWN. OLDER REVISIONS CONSOLIDATED AND FILED.

RELEASED TO DEVELOPMENT




- GENERAL NOTES:**
- (1) TERMINAL BLOCKS 1 AND 2 OPEN FACE LEFT, GROUND 1 OPEN FACE RIGHT.
 - (2) TERMINAL BLOCKS 3-13 OPEN FACE RIGHT, GROUND 2 OPEN FACE LEFT.
 - (3) FERRITE CORE NEEDS TO BE INSTALLED WITHIN 2" OF TERMINAL AND WRAPPED A MIN. OF 2X.
 - (4) IF ALARM IS ACTIVE 11-14 WILL BE CLOSED AND 11-12 WILL BE OPEN.

TORQUE SPECIFICATIONS	
ITEM	MIN - MAX
FUSE BLOCK	0.8 Nm - 1.6 Nm
TERMINAL BLOCK	0.4 Nm - 0.6 Nm
GROUND BLOCK	0.4 Nm - 0.6 Nm
PLC	0.5 Nm MAX
POWER CONVERTER	0.67 Nm MAX

WIRING TABLE			
AWG	COLOR	SERVICE	FIELD / INTERNAL
14	CUST. CHOICE	110 VAC	FIELD
14-16	BLACK	110 VAC +	INTERNAL
14-16	WHITE	110 VAC -	INTERNAL
16-18	BROWN	24 VDC +	INTERNAL
16-18	BLUE	0V	INTERNAL
16-22	GREY	SIGNAL	INTERNAL

REV	TASK#	SHEET	DESCRIPTION	DATE	DRAWN	APPR.
-	-	-	-	-	-	-
A0	-	-	RELEASE TO DEVELOPMENT	01/03/18	SRG	MRT



South-Tek Systems

PROPRIETARY AND CONFIDENTIAL
 THE INFORMATION CONTAINED IN THIS DRAWING IS THE SOLE PROPERTY OF SOUTH-TEK SYSTEMS. ANY REPRODUCTION IN PART OR AS A WHOLE WITHOUT THE WRITTEN PERMISSION OF SOUTH-TEK SYSTEMS IS PROHIBITED.

MATERIAL: TYP5P, ELECTRICAL SCHEMATIC FOR BLASTOFF

FINISH:

WEIGHT:

PROJECT NAME: SOUTH-TEK SYSTEMS

NUMBER: ES-TYP5P-A03

REVISIONS: ONLY THE LATEST 3 REVISIONS WILL BE SHOWN. OLDER REVISIONS CONSOLIDATED AND FILED.

REVISION: A0

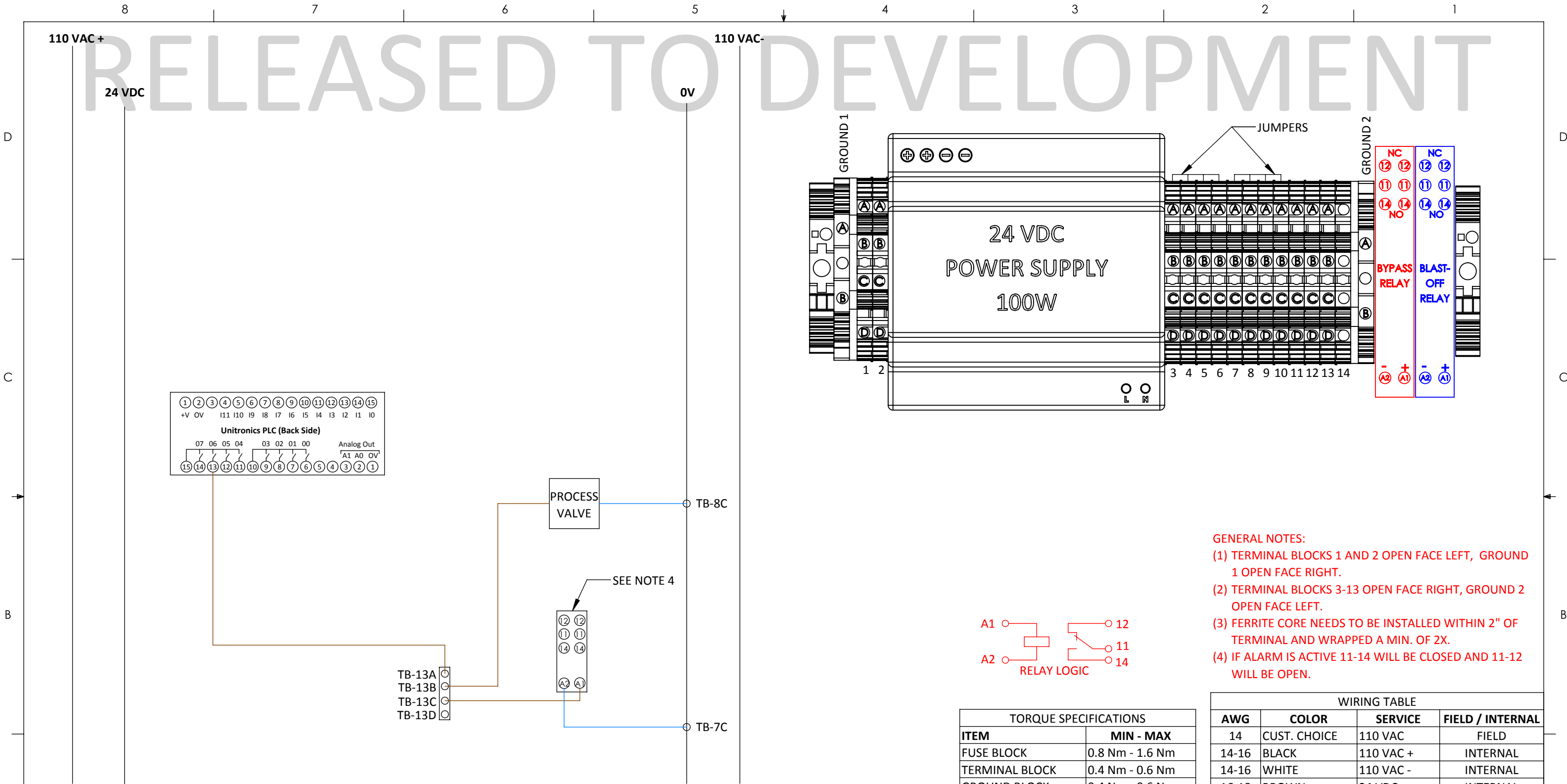
DATE: 01/03/18

DATE: 01/12/18

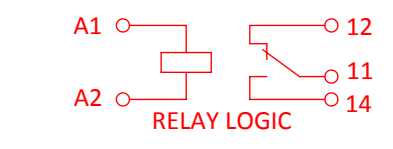
SCALE: 1:1

SHEET: 1 OF 1

RELEASED TO DEVELOPMENT




- GENERAL NOTES:**
- (1) TERMINAL BLOCKS 1 AND 2 OPEN FACE LEFT, GROUND 1 OPEN FACE RIGHT.
 - (2) TERMINAL BLOCKS 3-13 OPEN FACE RIGHT, GROUND 2 OPEN FACE LEFT.
 - (3) FERRITE CORE NEEDS TO BE INSTALLED WITHIN 2" OF TERMINAL AND WRAPPED A MIN. OF 2X.
 - (4) IF ALARM IS ACTIVE 11-14 WILL BE CLOSED AND 11-12 WILL BE OPEN.



TORQUE SPECIFICATIONS	
ITEM	MIN - MAX
FUSE BLOCK	0.8 Nm - 1.6 Nm
TERMINAL BLOCK	0.4 Nm - 0.6 Nm
GROUND BLOCK	0.4 Nm - 0.6 Nm
PLC	0.5 Nm MAX
POWER CONVERTER	0.67 Nm MAX

WIRING TABLE			
AWG	COLOR	SERVICE	FIELD / INTERNAL
14	CUST. CHOICE	110 VAC	FIELD
14-16	BLACK	110 VAC +	INTERNAL
14-16	WHITE	110 VAC -	INTERNAL
16-18	BROWN	24 VDC +	INTERNAL
16-18	BLUE	0V	INTERNAL
16-22	GREY	SIGNAL	INTERNAL

REV	TASK#	SHEET	DESCRIPTION	DATE	DRAWN	APPR.
-	-	-	-	-	-	-
A0	-	-	RELEASE TO DEVELOPMENT	01/03/18	SRG	MRT



TYP5P, ELECTRICAL SCHEMATIC FOR AUTO BYPASS

REVISIONS: ONLY THE LATEST 3 REVISIONS WILL BE SHOWN. OLDER REVISIONS CONSOLIDATED AND FILED.

PROPRIETARY AND CONFIDENTIAL
THE INFORMATION CONTAINED IN THIS DRAWING IS THE SOLE PROPERTY OF SOUTH-TEK SYSTEMS. ANY REPRODUCTION IN PART OR AS A WHOLE WITHOUT THE WRITTEN PERMISSION OF SOUTH-TEK SYSTEMS IS PROHIBITED.

UNLESS OTHERWISE SPECIFIED DIMENSIONS ARE IN INCHES

ANGLES	X.	.X	.XX	.XXX	X/X<10'	X/X>10'
±.5°	±1	±.2	±.03	±.005	±1/16	±1/8

NUMBER: ES-TYP5P-A04

REVISION: A0

DATE: 01/03/18 **APPROVED: MRT**

SCALE: 1:1 **SHEET: 1 OF 1**