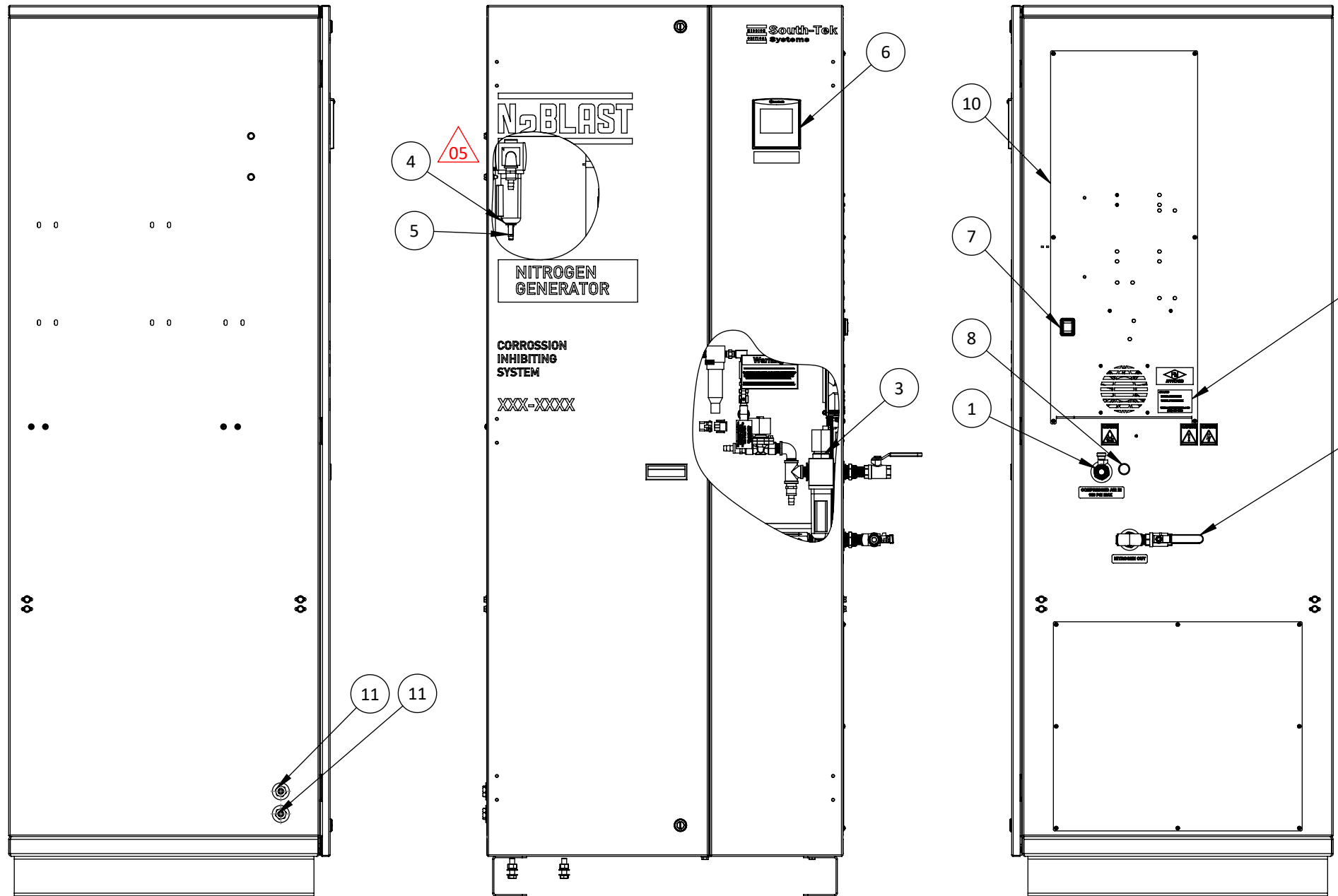


**\*THIS SHEET FOR TYP5P-FPS CONFIGURED TO OPERATE AT 100-120 VAC.**

CRITICAL COMPONENTS		
ITEM #	DESCRIPTION	SERVICE
1	1/2" NPT F BALL VALVE	AIR INPUT
2	1/2" NPT F BALL VALVE	N2 OUT
3	PARTICULATE FILTER, AIR REGULATOR	AIR POLISHING, PRESSURE LIMITING DEVICE
4	COALESCING FILTER	AIR POLISHING
5	ABSORBING FILTER	AIR POLISHING
6	PLC	SYSTEM CONTROLLER
7	15 AMP CIRCUIT BREAKER WITH SWITCH	SYSTEM MAIN POWER SUPPLY
8	1/2" TRADE SIZE CONDUIT HOLE	CUSTOMER MAIN POWER CONNECTION
9	SERIAL NUMBER LABEL	
10	UL 508A INDUSTRIAL CONTROL PANEL	
11	1/4" NPT CONDENSATION DRAIN	FILTER DRAIN LINES



FILTER REPLACEMENT KIT, STS PART # FRP-022		
STS PART #	DESCRIPTION	QTY
E5204-P5	PARTICULATE FILTER ELEMENT	1
E5204-C01	COALESCING FILTER ELEMENT	1
E5204-AC	ABSORBING FILTER, ELEMENT	1

NOTES:  
1) UNIT EQUIPPED WITH AUTO BYPASS

DESIGN DATA FOR N2-BLAST TYPE 5 SYSTEMS			
GENERATOR	FPS-10000	FPS-16500	FPS-22500
PURITY	98% +		
AIR REQUIREMENT	13 SCFM @ 125 PSI	17 SCFM @ 125 PSI	24 SCFM @ 125 PSI
N2 OUT PRESSURE	60-100 PSIG		
WEIGHT	554 LB	587 LB	638 LB
ELECTRICAL	100-120V / 60HZ / 1PHASE, 5 AMPS		

REV.	ECO#	DESCRIPTION	DATE	REV'D BY	APPD. BY
05	10931	FILTER LOCATION, CABINET SIZE AND WEIGHT CHANGE, MB	10/15/24	BS	SDA
04	-	UPDATED DESIGN DATA	02/01/23	CNC	MFG
03	10444	FRP KIT UPDATE, ADD SHEET FOR 200-240V	09/08/21	SDA	MFG

REVISIONS: ONLY THE LAST 3 REVISIONS WILL BE SHOWN. OLDER REVISIONS CONSOLIDATED AND FILED

**MISSION South-Tek Systems**

PROPRIETARY AND CONFIDENTIAL  
THE INFORMATION CONTAINED IN THIS DRAWING IS THE SOLE PROPERTY OF SOUTH-TEK SYSTEMS. ANY REPRODUCTION IN PART OR AS A WHOLE WITHOUT THE WRITTEN PERMISSION OF SOUTH-TEK SYSTEMS IS PROHIBITED.

MATERIAL:  
FINISH:  
WEIGHT:

UNLESS OTHERWISE SPECIFIED DIMENSIONS ARE IN INCHES

ANGLES	X.	.X	.XX	.XXX	X/X<10'	X/X>10'
±.5°	±1	±.2	±.03	±.005	±1/16	±1/8

TYP5P DESIGN DATA AND DIMENSIONS

PROJECT NAME: **DETAIL DRAWING**

FM APPROVAL APPLIES: YES

SIZE: B

SCALE: 1:12

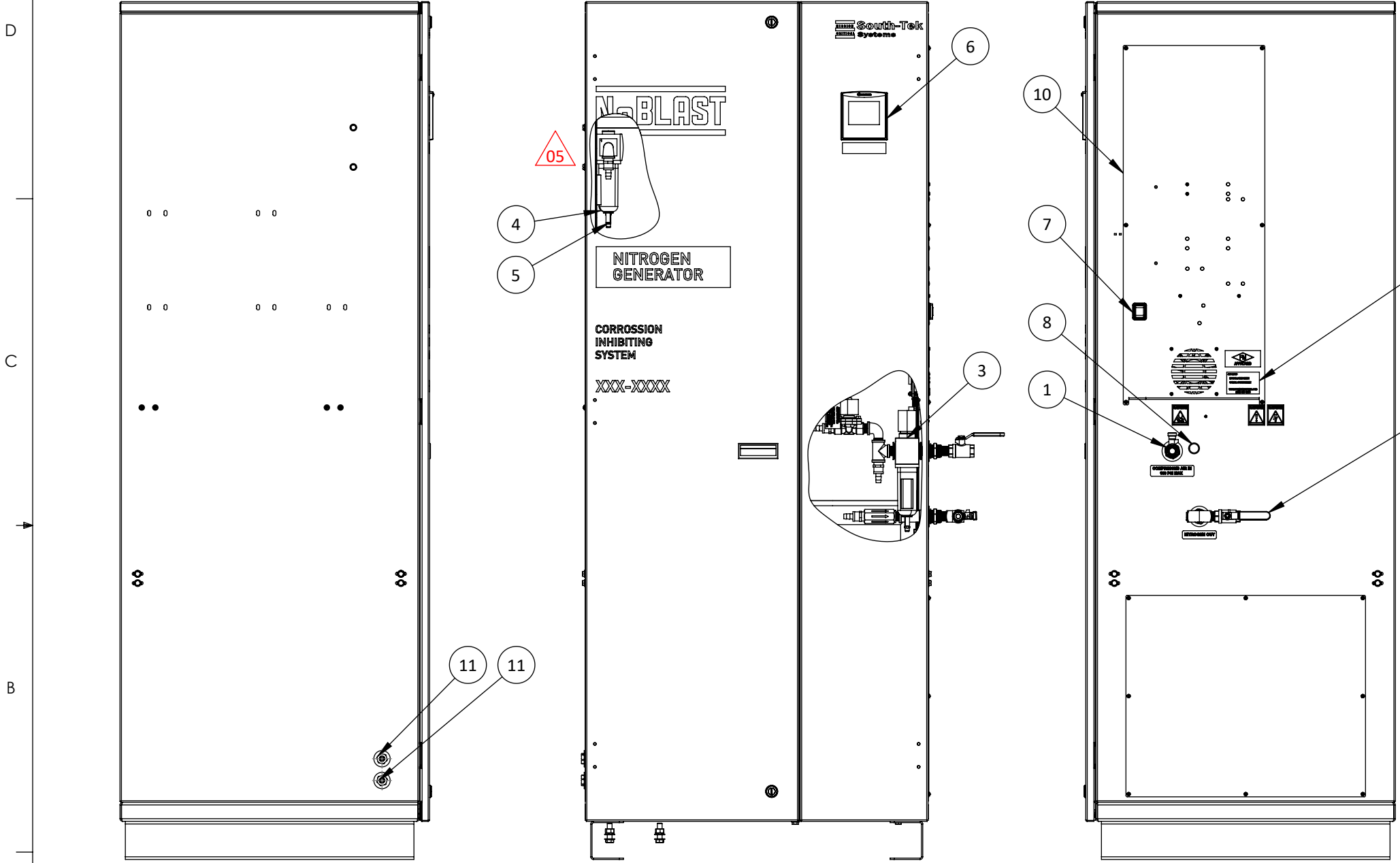
SHEET: 1 OF 3

REVISION: **05**

NUMBER: **DD-TYP5P-FPS**

**\*THIS SHEET FOR TYP5P-FPS CONFIGURED TO OPERATE AT 200-220 VAC OR 208-240 VAC.\***  
**CE CONFIGURATIONS SHOWN THIS SHEET, ADDITIONAL NPT TO BSPT ADAPTERS SHIP LOOSE**

CRITICAL COMPONENTS		
ITEM #	DESCRIPTION	SERVICE
1	1/2" NPT F BALL VALVE (BSPT F FOR CE)	AIR INPUT
2	1/2" NPT F BALL VALVE (BSPT F FOR CE)	N2 OUT
3	PARTICULATE FILTER, AIR REGULATOR	AIR POLISHING, PRESSURE LIMITING DEVICE
4	COALESCING FILTER	AIR POLISHING
5	ABSORBING FILTER	AIR POLISHING
6	PLC	SYSTEM CONTROLLER
7	15 AMP CIRCUIT BREAKER WITH SWITCH	SYSTEM MAIN POWER SUPPLY
8	1/2" TRADE SIZE CONDUIT HOLE	CUSTOMER MAIN POWER CONNECTION
9	SERIAL NUMBER LABEL	
10	UL 508A INDUSTRIAL CONTROL PANEL	
11	1/4" NPT CONDENSATION DRAIN	FILTER DRAIN LINES



FILTER REPLACEMENT KIT, STS PART # FRP-022		
STS PART #	DESCRIPTION	QTY
E5204-P5	PARTICULATE FILTER ELEMENT	1
E5204-C01	COALESCING FILTER ELEMENT	1
E5204-AC	ABSORBING FILTER, ELEMENT	1

NOTES:  
 1) UNIT EQUIPPED WITH AUTO BYPASS

DESIGN DATA FOR N2-BLAST TYPE 5 SYSTEMS			
GENERATOR	FPS-10000	FPS-16500	FPS-22500
PURITY	98% +		
AIR REQUIREMENT	13 SCFM @ 125 PSI	17 SCFM @ 125 PSI	24 SCFM @ 125 PSI
N2 OUT PRESSURE	60-100 PSIG		
WEIGHT	554 LB	587 LB	638 LB
ELECTRICAL	(200-220V/50HZ/1PHASE,2.3 AMPS)/(208-240V/60HZ/1PH,2.4 AMPS)		

REV.	ECO#	DESCRIPTION	DATE	REV'D BY	APPD. BY
05	10931	FILTER LOCATION, CABINET SIZE AND WEIGHT CHANGE, MB	10/15/24	BS	SDA
04	-	UPDATED DESIGN DATA	02/01/23	CNC	MFG
03	10444	FRP KIT UPDATE, ADD SHEET FOR 200-240V	09/08/21	SDA	MFG

REVISIONS: ONLY THE LAST 3 REVISIONS WILL BE SHOWN. OLDER REVISIONS CONSOLIDATED AND FILED

**MISSION South-Tek CRITICAL Systems**

PROPRIETARY AND CONFIDENTIAL  
 THE INFORMATION CONTAINED IN THIS DRAWING IS THE SOLE PROPERTY OF SOUTH-TEK SYSTEMS. ANY REPRODUCTION IN PART OR AS A WHOLE WITHOUT THE WRITTEN PERMISSION OF SOUTH-TEK SYSTEMS IS PROHIBITED.

MATERIAL:  
 FINISH:  
 WEIGHT:

UNLESS OTHERWISE SPECIFIED DIMENSIONS ARE IN INCHES

ANGLES	X.	.X	.XX	.XXX	X/X<10'	X/X>10'
+ .5°	±1	±.2	±.03	±.005	±1/16	±1/8

TYP5P DESIGN DATA AND DIMENSIONS

PROJECT NAME: **DETAIL DRAWING**

FM APPROVAL APPLIES: YES

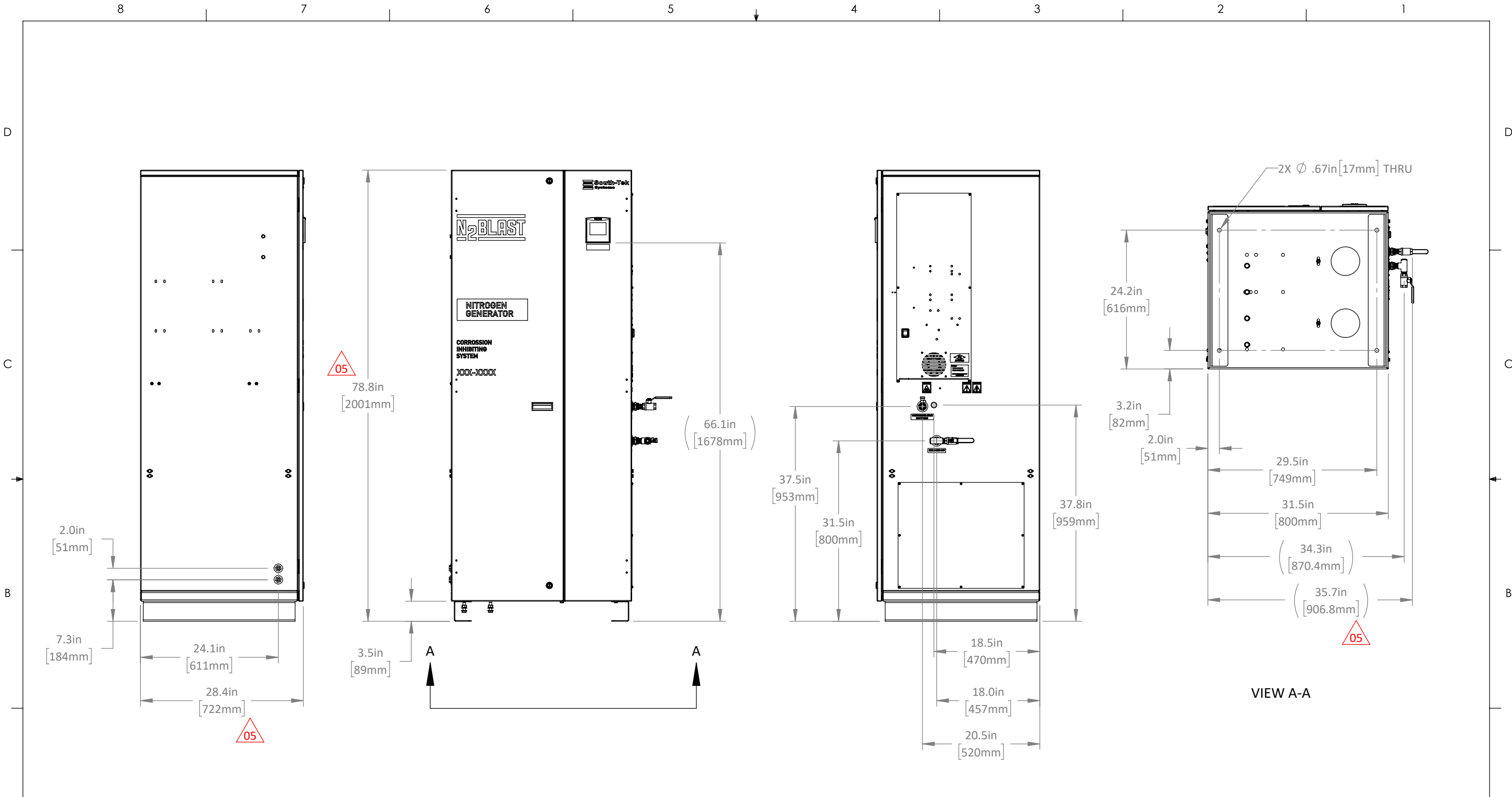
SIZE: B

SCALE: 1:12

SHEET: 2 OF 3

REVISION: **05**

NUMBER: **DD-TYP5P-FPS**



05	10931	FILTER LOCATION, CABINET SIZE AND WEIGHT CHANGE, MB	10/15/24	BS	SDA
04	-	UPDATED DESIGN DATA	02/01/23	CNC	MFG
03	10444	FRP KIT UPDATE, ADD SHEET FOR 200-240V	09/08/21	SDA	MFG
REV.	ECO#	DESCRIPTION	DATE	REV'D BY	APPD. BY
REVISIONS: ONLY THE LAST 3 REVISIONS WILL BE SHOWN. OLDER REVISIONS CONSOLIDATED AND FILED					

**MISSION** **South-Tek**  
**CRITICAL** Systems

PROPRIETARY AND CONFIDENTIAL  
THE INFORMATION CONTAINED IN THIS DRAWING IS THE SOLE  
PROPERTY OF SOUTH-TEK SYSTEMS. ANY REPRODUCTION IN  
PART OR AS A WHOLE WITHOUT THE WRITTEN PERMISSION  
OF SOUTH-TEK SYSTEMS IS PROHIBITED.

MATERIAL:						
FINISH:						
WEIGHT:			PROJECT NAME: DETAIL DRAWING			
UNLESS OTHERWISE SPECIFIED DIMENSIONS ARE IN INCHES						
ANGLES	X.	.X	.XX	.XXX	X/X<10'	X/X>10'
±.5°	±1	±.2	±.03	±.005	±1/16	±1/8

TYP5P DESIGN DATA AND DIMENSIONS				DRAWN: MRT	APPROVED: SDA
				DATE: 09/15/17	DATE: 10/15/24
FM APPROVAL APPLIES: YES		SIZE: B	SCALE: 1:16	SHEET: 3 OF 3	
NUMBER: <b>DD-TYP5P-FPS</b>				REVISION: <b>05</b>	