
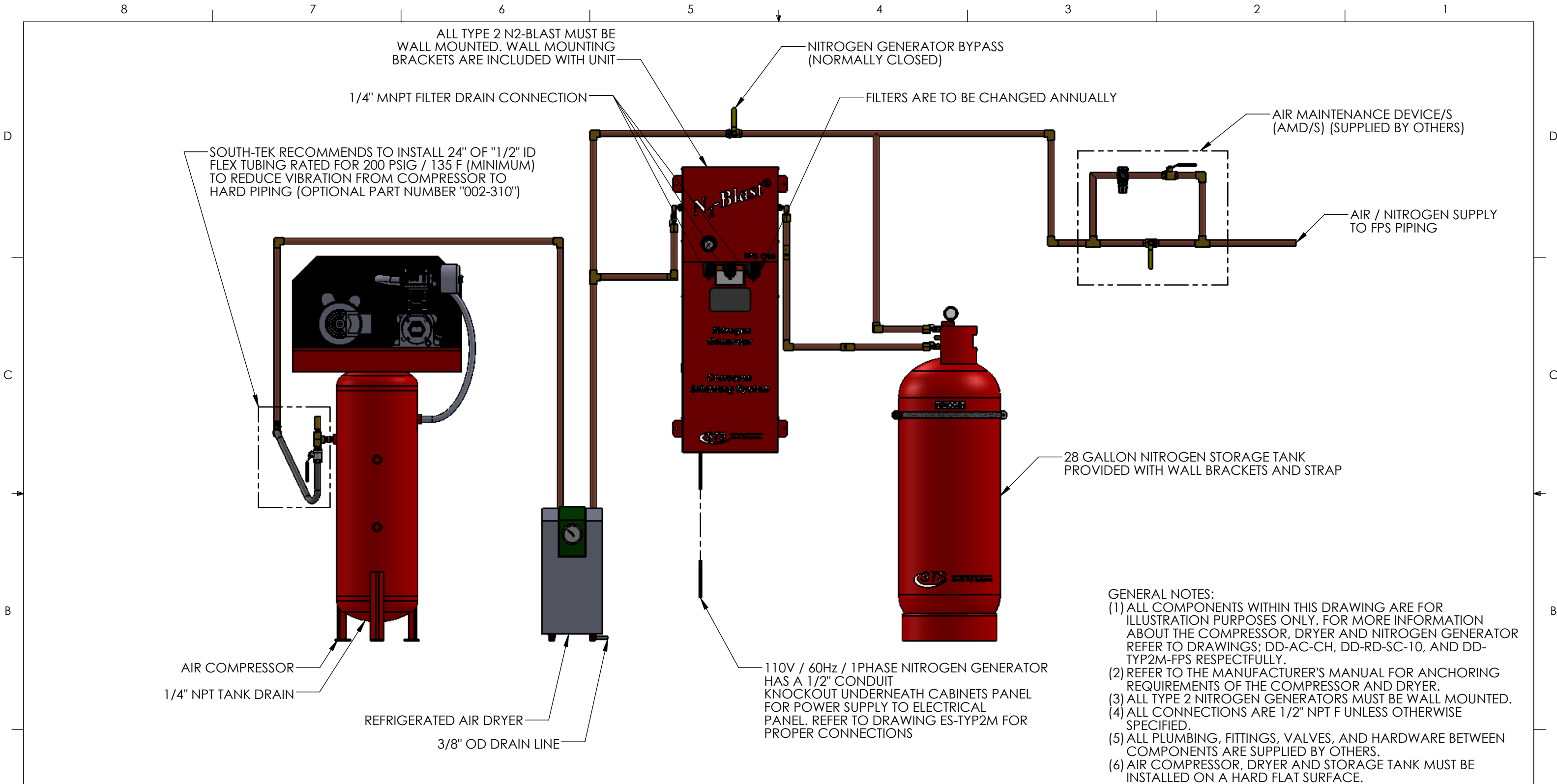



TABLE OF CONTENTS	
SHEET #	DESCRIPTION
1	TABLE OF CONTENTS
2	GENERAL ARRANGEMENT
3	GENERAL ARRANGEMENT WITH BYPASS

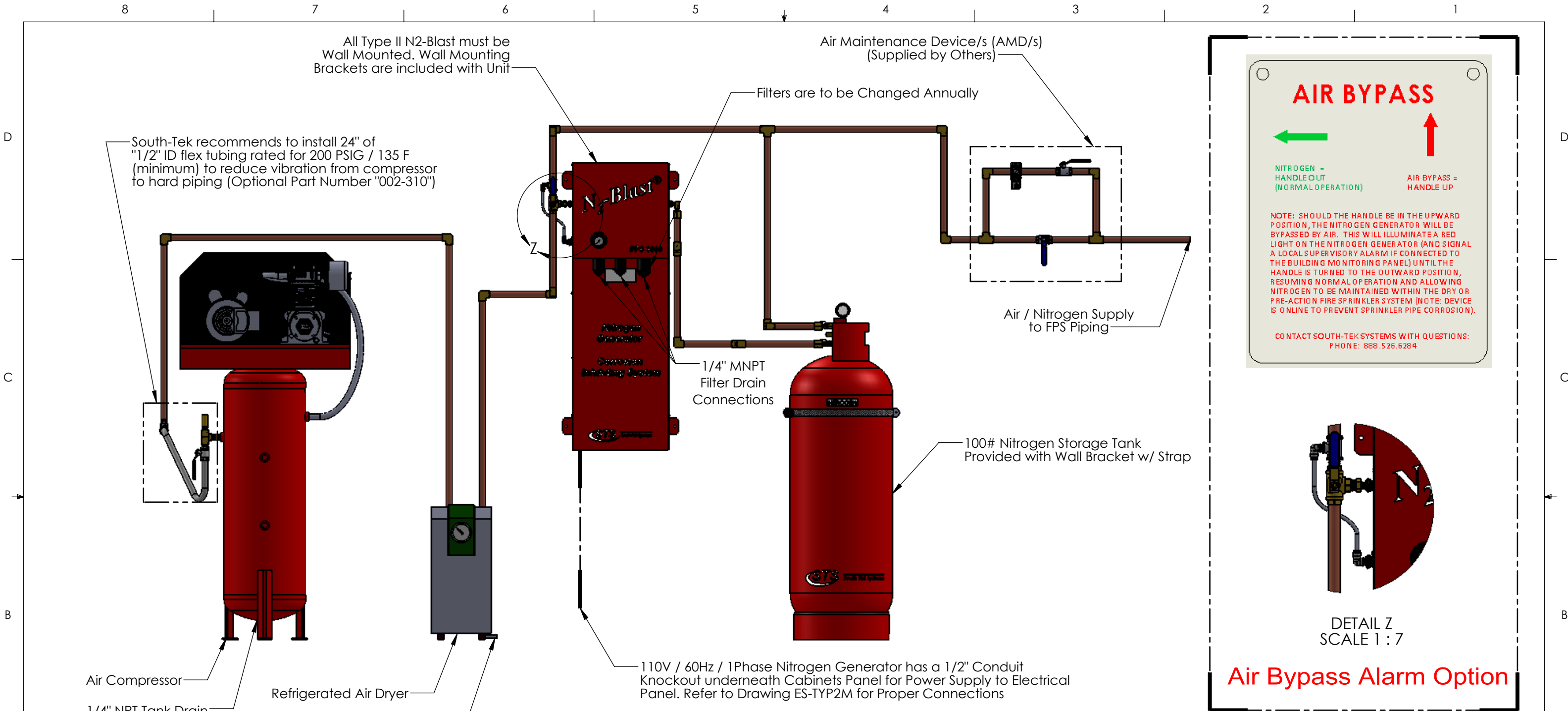
A									MATERIAL:		N2-BLAST, TYPE 2, GENERAL ARRANGEMENT WITH (JV) VERTICAL COMPRESSOR AND REFRIGERATED AIR DRYER, TABLE OF CONTENTS		DRAWN: PJS		APPROVED: JVN	
	-	-	2	UPDATED TITLE BLOCK AND TEXT FORMAT	7/22/2015	PJS	JVN		FINISH:				DATE: 11/28/14	DATE: 11/28/14		
	-	-	1	UPDATED COMPRESSOR MODEL	7/22/2015	PJS	JVN		WEIGHT:		PROJECT NAME: SOUTH-TEK SYSTEMS	SIZE: B	SCALE: 1:18	SHEET: 1 OF 3		
	DRAWING	ECR	REV.	DESCRIPTION	DATE	CHANGED BY	APPROVED BY	UNLESS OTHERWISE SPECIFIED DIMENSIONS ARE IN INCHES WHOLE NUMBER DIM's: ± .1 ONE DEC.: ± .2, TWO DEC.: ± .02 THREE DEC.: ± .005 , ANG.: ± .05°		NUMBER: GA-TYP2M-JV		REVISION: 2				
	REVISIONS							THE INFORMATION CONTAINED IN THIS DRAWING IS THE SOLE PROPERTY OF SOUTH-TEK SYSTEMS. ANY REPRODUCTION IN PART OR AS A WHOLE WITHOUT THE WRITTEN PERMISSION OF SOUTH-TEK SYSTEMS IS PROHIBITED.								
<div><div>8</div><div>7</div><div>6</div><div>5</div><div>4</div><div>3</div><div>2</div><div>1</div></div>																

A horizontal number line is shown with tick marks at every integer from 0 to 8. The numbers 8, 7, 6, 5, 4, 3, 2, and 1 are labeled below the line from left to right. An arrow points upwards to the midpoint between the tick marks for 4 and 5, which represents the number 4.5.



- GENERAL NOTES:
- (1) ALL COMPONENTS WITHIN THIS DRAWING ARE FOR ILLUSTRATION PURPOSES ONLY. FOR MORE INFORMATION ABOUT THE COMPRESSOR, DRYER AND NITROGEN GENERATOR REFER TO DRAWINGS; DD-AC-CH, DD-RD-SC-10, AND DD-TYP2M-FPS RESPECTFULLY.
 - (2) REFER TO THE MANUFACTURER'S MANUAL FOR ANCHORING REQUIREMENTS OF THE COMPRESSOR AND DRYER.
 - (3) ALL TYPE 2 NITROGEN GENERATORS MUST BE WALL MOUNTED.
 - (4) ALL CONNECTIONS ARE 1/2" NPT F UNLESS OTHERWISE SPECIFIED.
 - (5) ALL PLUMBING, FITTINGS, VALVES, AND HARDWARE BETWEEN COMPONENTS ARE SUPPLIED BY OTHERS.
 - (6) AIR COMPRESSOR, DRYER AND STORAGE TANK MUST BE INSTALLED ON A HARD FLAT SURFACE.

A								MATERIAL:	N2-BLAST, TYPE 2, GENERAL ARRANGEMENT WITH (JV) VERTICAL COMPRESSOR AND REFRIGERATED AIR DRYER		DRAWN: PJS	APPROVED: JVN
	-	-	2	UPDATED TITLE BLOCK AND TEXT FORMAT	7/22/2015	PJS		JVN			FINISH:	DATE: 11/28/14
	-	-	1	UPDATED COMPRESSOR MODEL	7/22/2015	PJS		JVN	WEIGHT:	PROJECT NAME: SOUTH-TEK SYSTEMS	SIZE: B	SCALE: 1:14
	DRAWING	ECR	REV.	DESCRIPTION	DATE	CHANGED BY	APPROVED BY	UNLESS OTHERWISE SPECIFIED DIMENSIONS ARE IN INCHES WHOLE NUMBER DIM's: ± 1 ONE DEC.: ± .2, TWO DEC.: ± .02 THREE DEC.: ± .005 , ANG.: ± .05°	NUMBER: GA-TYP2M-JV			REVISION: 2
	REVISIONS											
<div><div>8</div><div>7</div><div>6</div><div>5</div><div>4</div><div>3</div><div>2</div><div>1</div></div>												



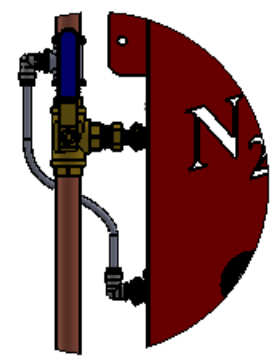
AIR BYPASS

← NITROGEN = HANDLE OUT (NORMAL OPERATION) →

↑ AIR BYPASS = HANDLE UP

NOTE: SHOULD THE HANDLE BE IN THE UPWARD POSITION, THE NITROGEN GENERATOR WILL BE BYPASSED BY AIR. THIS WILL ILLUMINATE A RED LIGHT ON THE NITROGEN GENERATOR (AND SIGNAL A LOCAL SUPERVISORY ALARM IF CONNECTED TO THE BUILDING MONITORING PANEL) UNTIL THE HANDLE IS TURNED TO THE OUTWARD POSITION, RESUMING NORMAL OPERATION AND ALLOWING NITROGEN TO BE MAINTAINED WITHIN THE DRY OR PRE-ACTION FIRE SPRINKLER SYSTEM (NOTE: DEVICE IS ONLINE TO PREVENT SPRINKLER PIPE CORROSION).

CONTACT SOUTH-TEK SYSTEMS WITH QUESTIONS:
PHONE: 888.526.6284

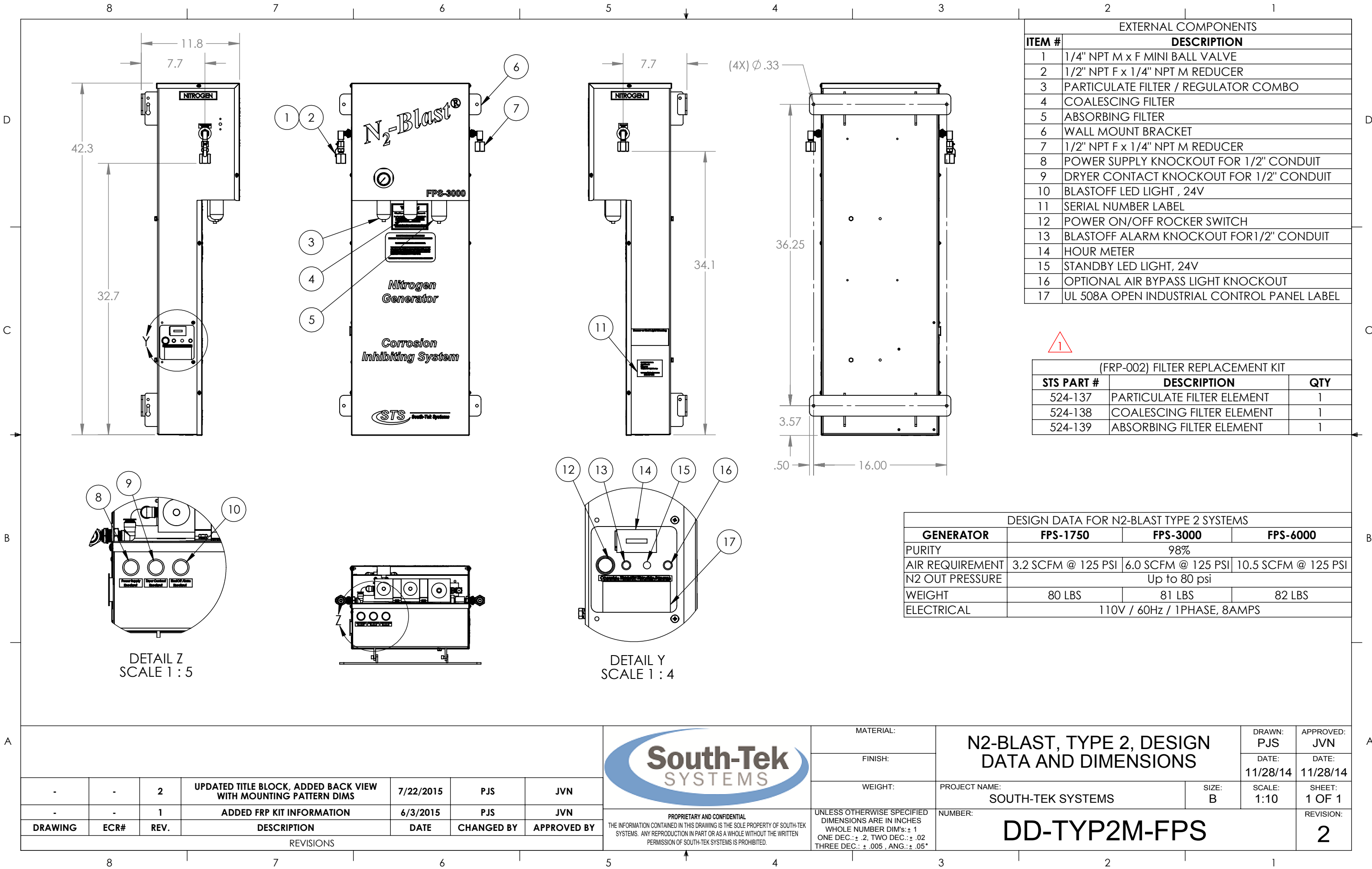


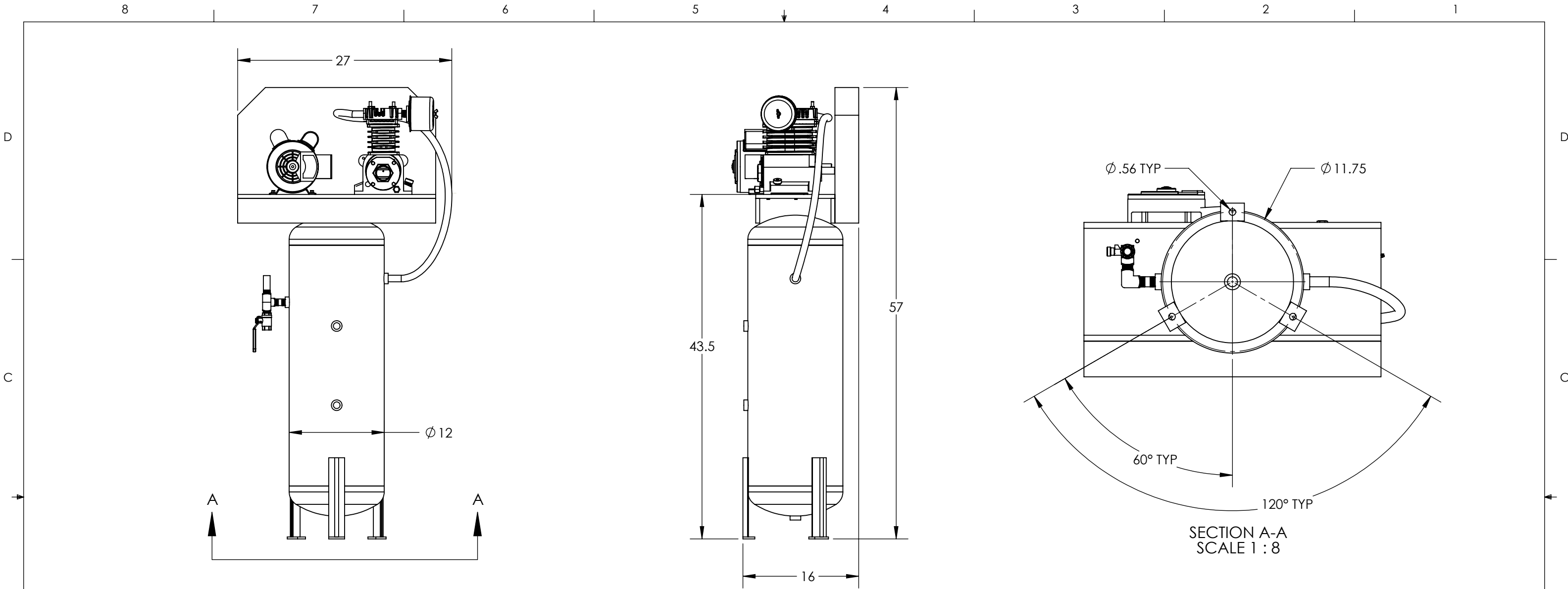
DETAIL Z
SCALE 1 : 7

Air Bypass Alarm Option


- General Notes:
- 1) All Components within this Drawing are for Illustration Purposes only. For more information about the Compressor, Dryer and Nitrogen Generator refer to Drawings; DD-AC-CH, DD-RD-SC-10, and DD-TYP2M-FPS respectfully.
 - 2) Refer to the Manufacturer's Manual for Anchoring Requirements of the Compressor and Dryer.
 - 3) All Type II Nitrogen Generators must be Wall Mounted.
 - 4) All Connections are 1/2" NPT F unless otherwise specified.
 - 5) All Plumbing, Fittings, Valves, and hardware between components are Supplied by Others.
 - 6) Air Compressor, Dryer and Storage Tank must be installed on a hard flat surface.

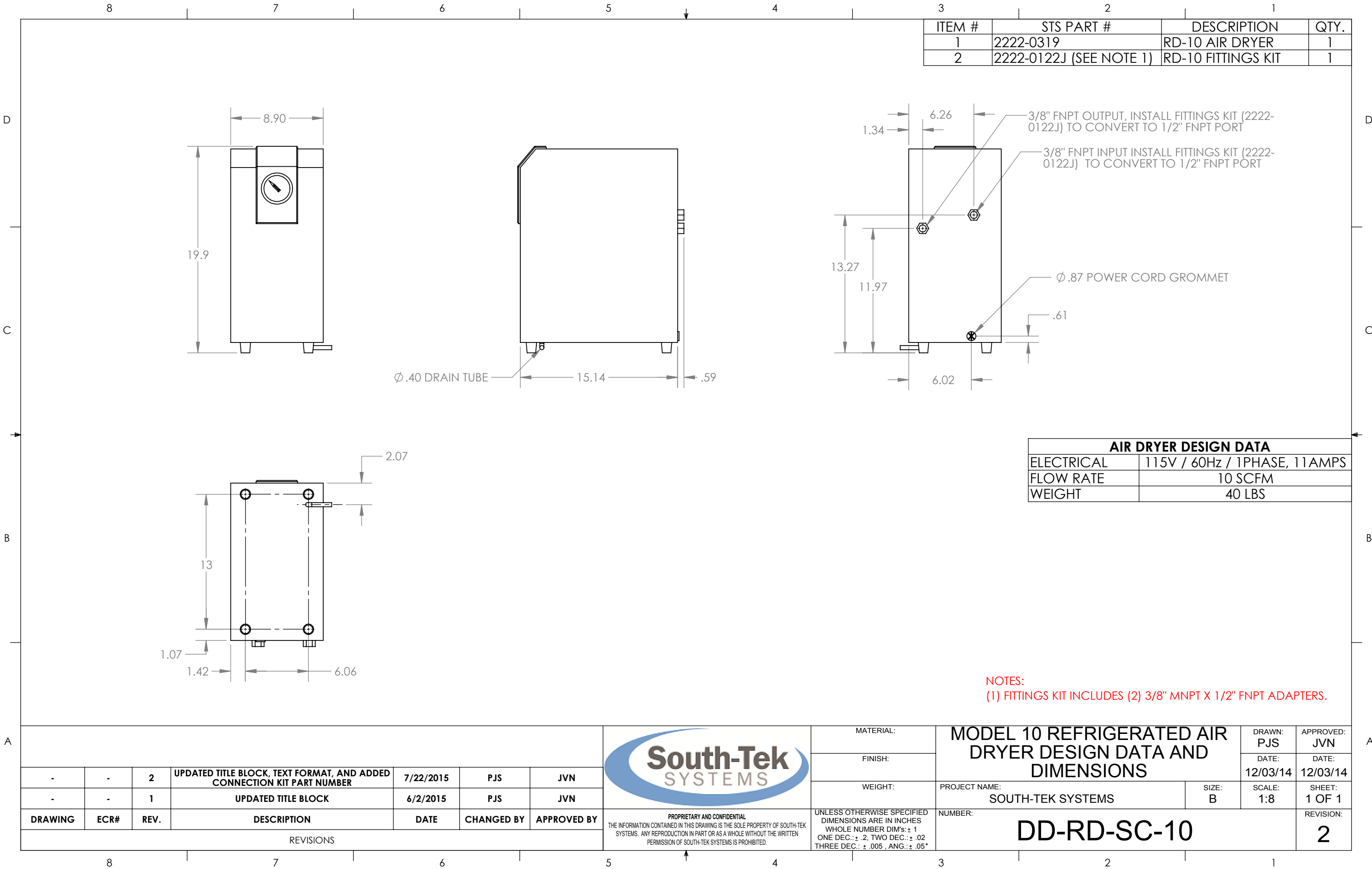
		N2-Blast, Type II, General Arrangement with (JV) Vertical Compressor, Refrigerated Air Dryer and Air Bypass			
UNLESS OTHERWISE SPECIFIED DIMENSIONS ARE IN INCHES		MATERIAL:		FINISH:	WEIGHT:
TOLERANCES:		DRAWN BY: PJS		CHECKED BY:	APPROVED BY:
Whole Number Dim's: ± 1 One Place Decimal: ± .2 Two Place Decimals: ± .02 Three Place Decimals: ± .005 Angular: ± .05°		DATE: 11/28/14		DATE:	DATE:
PROPRIETARY AND CONFIDENTIAL THE INFORMATION CONTAINED IN THIS DRAWING IS THE SOLE PROPERTY OF SOUTH-TEK SYSTEMS. ANY REPRODUCTION IN PART OR AS A WHOLE WITHOUT THE WRITTEN PERMISSION OF SOUTH-TEK SYSTEMS IS PROHIBITED.		PROJECT NAME: South-Tek Systems		SIZE: B	SCALE: 1:14
		NUMBER: GA-TYP2M-JV-03		SHEET: 3 of 3	REVISION: 1





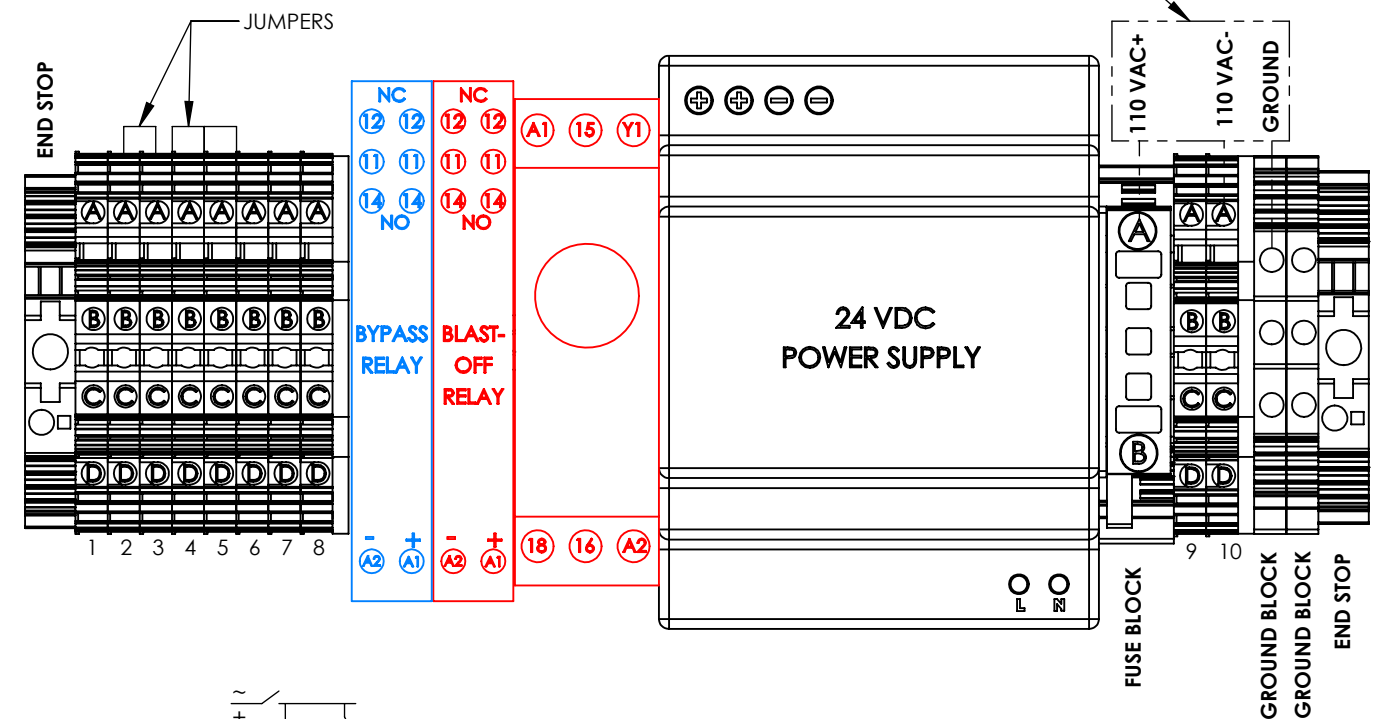
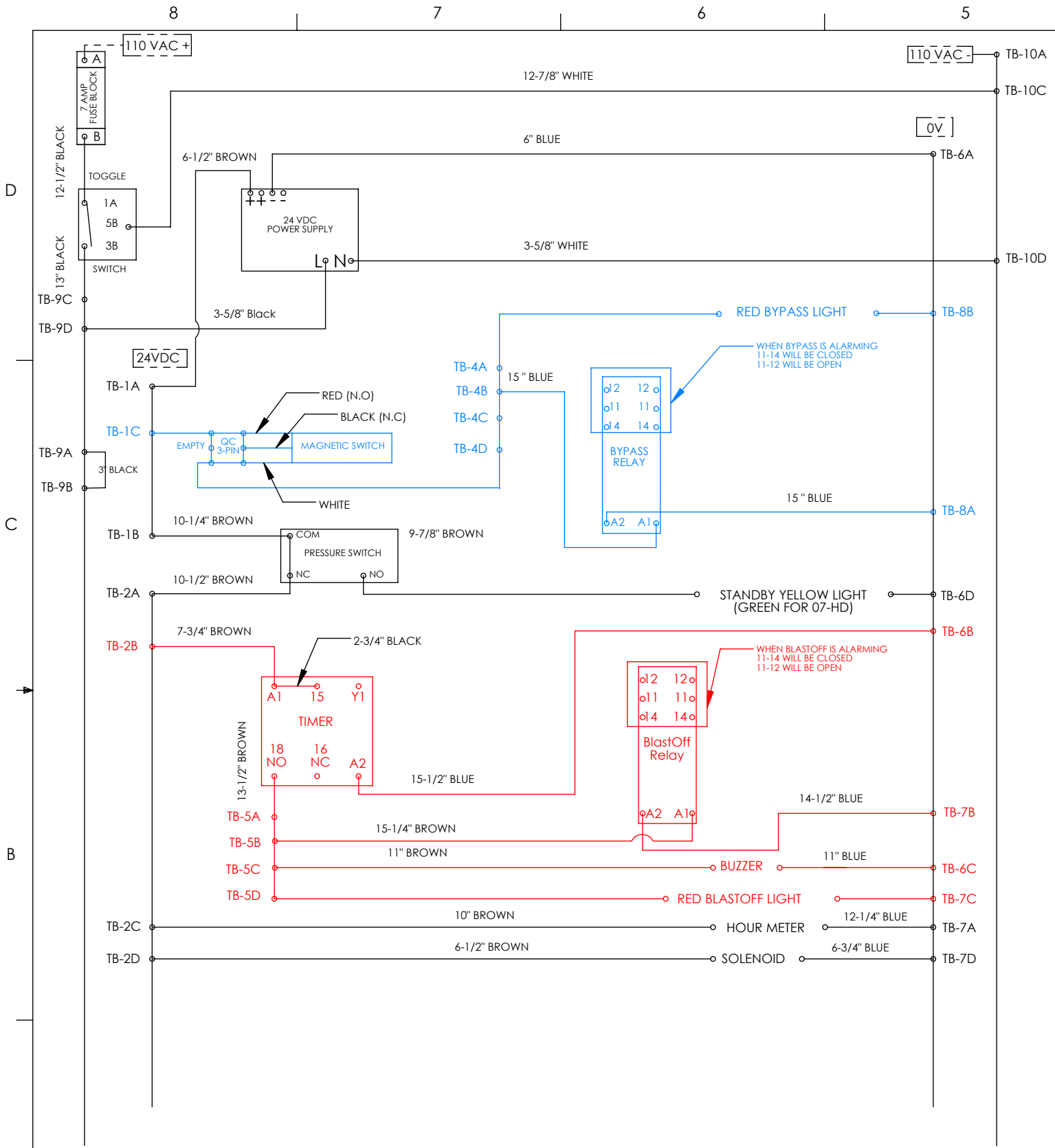
AVAILABLE ELECTRICAL OPTIONS AND DESIGN DATA				
CUSTOMER #	ELECTRICAL	MOTOR	AIR FLOW	WEIGHT
STS-NF-C-2-J	120V / 60Hz / 1PHASE, 10.6 AMPS	1 HP	3.8 SCFM @ 120 - 140 PSI	250 LBS
STS-NF-C-2-J	208V / 60Hz / 1PHASE, 4.3 AMPS			
STS-NF-C-2-J	230V / 60Hz / 1PHASE, 5.3 AMPS			
STS-NF-C-2-J	208V / 60Hz / 3PHASE, 3.5 AMPS			
STS-NF-C-2-J	230V / 60Hz / 3PHASE, 3.6 AMPS			
STS-NF-C-2-J	460V / 60Hz / 3PHASE, 1.8 AMPS	2 HP	7.6 SCFM @ 120 - 140 PSI	250 LBS
STS-NF-C-3-J	120V / 60Hz / 1PHASE, 18.4 AMPS			
STS-NF-C-3-J	208V / 60Hz / 1PHASE, 10.2 AMPS			
STS-NF-C-3-J	230V / 60Hz / 1PHASE, 9.2 AMPS			
STS-NF-C-3-J	208V / 60Hz / 3PHASE, 6.2 AMPS			
STS-NF-C-3-J	230V / 60Hz / 3PHASE, 6.2 AMPS			
STS-NF-C-3-J	460V / 60Hz / 3PHASE, 301 AMPS			

<div><p>PROPRIETARY AND CONFIDENTIAL THE INFORMATION CONTAINED IN THIS DRAWING IS THE SOLE PROPERTY OF SOUTH-TEK SYSTEMS. ANY REPRODUCTION IN PART OR AS A WHOLE WITHOUT THE WRITTEN PERMISSION OF SOUTH-TEK SYSTEMS IS PROHIBITED.</p></div>	MATERIAL:		(JV) VERTICAL COMPRESSOR DESIGN DATA AND DIMENSIONS		DRAWN: PJS	APPROVED: JVN		
	FINISH:				DATE: 12/02/14	DATE: 12/02/14		
	WEIGHT:				SCALE: DNS	SHEET: 1 OF 1		
	UNLESS OTHERWISE SPECIFIED DIMENSIONS ARE IN INCHES WHOLE NUMBER DIM's: ± .1 ONE DEC.: ± .02 THREE DEC.: ± .005 , ANG.: ± .05°		PROJECT NAME: SOUTH-TEK SYSTEMS			REVISION: 3		
NUMBER: DD-AC-JV			SIZE: B					
REVISIONS								
DRAWING	ECR#	REV.	DESCRIPTION	DATE	CHANGED BY	APPROVED BY		
-	-	3	UPDATED TITLE BLOCK AND TEXT FORMAT	7/22/2015	PJS	JVN		
-	-	2	UPDATED ELECTRICAL TABLE	6/2/2015	PJS	JVN		
-	-	1	UPDATED ELECTRICAL TABLE	2/13/2015	PJS	JVN		



NOTES:
(1) FITTINGS KIT INCLUDES (2) 3/8" MNPT X 1/2" FNPT ADAPTERS.

								MATERIAL:	MODEL 10 REFRIGERATED AIR DRYER DESIGN DATA AND DIMENSIONS		DRAWN: PJS	APPROVED: JVN
								FINISH:			DATE: 12/03/14	DATE: 12/03/14
-	-	2	UPDATED TITLE BLOCK, TEXT FORMAT, AND ADDED CONNECTION KIT PART NUMBER	7/22/2015	PJS	JVN		WEIGHT:	PROJECT NAME: SOUTH-TEK SYSTEMS	SIZE: B	SCALE: 1:8	SHEET: 1 OF 1
-	-	1	UPDATED TITLE BLOCK	6/2/2015	PJS	JVN	<p>PROPRIETARY AND CONFIDENTIAL</p> <p>THE INFORMATION CONTAINED IN THIS DRAWING IS THE SOLE PROPERTY OF SOUTH-TEK SYSTEMS. ANY REPRODUCTION IN PART OR AS A WHOLE WITHOUT THE WRITTEN PERMISSION OF SOUTH-TEK SYSTEMS IS PROHIBITED.</p>	UNLESS OTHERWISE SPECIFIED DIMENSIONS ARE IN INCHES WHOLE NUMBER DIM's: ± 1 ONE DEC.: ± .2, TWO DEC.: ± .02 THREE DEC.: ± .005 , ANG.: ± .05°	NUMBER: DD-RD-SC-10		REVISION: 2	
DRAWING	ECR#	REV.	DESCRIPTION	DATE	CHANGED BY	APPROVED BY						
REVISIONS												



GENERAL NOTES:
(1) ALL TERMINAL BLOCKS OPEN SIDE WILL FACE RIGHT, OR DOWN IN FINAL INSTALLATION POSITION.
(2) BOTH GROUND BLOCKS OPEN SIDE WILL FACE LEFT.
(3) ITEMS IN RED ARE FOR THE ELECTRICAL WIRING IF BLASTOFF ASSEMBLY IS INSTALLED "STS PART# - A00-TYP2M".
(4) ITEMS IN BLUE ARE FOR THE ELECTRICAL WIRING IF BYPASS ASSEMBLY IS INSTALLED "STS PART# - TYP2M-N2-BP".

WIRING TABLE			
AWG	COLOR	SERVICE	FIELD/INTERNAL
14	CUST. DETERMINED	120 VAC	FIELD
14-16	BLACK	+120 VAC	INTERNAL
14-16	WHITE	-120 VAC	INTERNAL
16-18	BROWN	24 + VDC	INTERNAL
16-18	BLUE	0V	INTERNAL
16-18	YELLOW	SIGNAL	INTERNAL

TORQUE SPECIFICATIONS	
ITEM	MIN - MAX
TERMINAL BLOCK	0.4 Nm - 0.6 Nm
FUSE BLOCK	0.8 Nm - 1.6 Nm
GROUND BLOCK	0.4 Nm - 0.6 Nm
POWER SUPPLY	.67 Nm MAX

DRAWING	ECR#	REV.	DESCRIPTION	DATE	CHANGED BY	APPROVED BY
-	-	6	ADDED MAGNETIC SWITCH REMOVED COLD CLIMATE DRYER OPTION	8/21/2015	PJS	JVN
-	-	5	UPDATED TITLE BLOCK AND TEXT FORMAT	7/22/2015	PJS	JVN
-	-	1-4	OLDER REVS CONSOLIDATED AND FILED	7/22/2015	PJS	JVN
REVISIONS						



PROPRIETARY AND CONFIDENTIAL
THE INFORMATION CONTAINED IN THIS DRAWING IS THE SOLE PROPERTY OF SOUTH-TEK SYSTEMS. ANY REPRODUCTION IN PART OR AS A WHOLE WITHOUT THE WRITTEN PERMISSION OF SOUTH-TEK SYSTEMS IS PROHIBITED.

MATERIAL:
FINISH:
WEIGHT:
UNLESS OTHERWISE SPECIFIED
DIMENSIONS ARE IN INCHES
WHOLE NUMBER DIM'S: ± .1
ONE DEC.: ± .2, TWO DEC.: ± .02
THREE DEC.: ± .005, ANG.: ± .05°

TYPE 2M, ELECTRICAL PANEL WIRING			DRAWN: PJS	APPROVED: JVN
PROJECT NAME: SOUTH-TEK SYSTEMS			DATE: 08/29/14	DATE: 08/29/14
NUMBER: ES-TYP2M			SIZE: B	SHEET: 1 OF 1
			SCALE: 2.5:3	REVISION: 6