

**N2-BLAST, FPS-1750/3000/6000, (TYPE 2), GENERAL
ARRANGEMENT WITH (CH)
VERTICAL COMPRESSOR AND REFRIGERATED AIR DRYER**

TABLE OF CONTENTS	
SHEET #	DESCRIPTION
1	TABLE OF CONTENTS
2	GENERAL ARRANGEMENT STANDARD
3	GENERAL ARRANGEMENT WITH OPTIONAL BYPASS

								MATERIAL:	N2-BLAST, TYPE 2, GENERAL ARRANGEMENT WITH (CH) VERTICAL COMPRESSOR AND REFRIGERATED AIR DRYER, TABLE OF CONTENTS	DRAWN: PJS	APPROVED: JVN
								FINISH:		DATE: 11/28/14	DATE: 11/28/14
								WEIGHT:		PROJECT NAME: SOUTH-TEK SYSTEMS	SIZE: B
ALL	-	2	UPDATED TITLE BLOCK AND TEXT FORMAT	7/22/2015	PJS	JVN	NUMBER: GA-TYP2M-CH		REVISION: 2		
2-3	-	1	UPDATED COMPRESSOR	6/1/2015	PJS	JVN					
DRAWING	ECR	REV.	DESCRIPTION	DATE	CHANGED BY	APPROVED BY	UNLESS OTHERWISE SPECIFIED DIMENSIONS ARE IN INCHES WHOLE NUMBER DIM's: ± 1 ONE DEC.: ± .2, TWO DEC.: ± .02 THREE DEC.: ± .005, ANG.: ± .05°				
REVISIONS											



PROPRIETARY AND CONFIDENTIAL
 THE INFORMATION CONTAINED IN THIS DRAWING IS THE SOLE PROPERTY OF SOUTH-TEK
 SYSTEMS. ANY REPRODUCTION IN PART OR AS A WHOLE WITHOUT THE WRITTEN
 PERMISSION OF SOUTH-TEK SYSTEMS IS PROHIBITED.

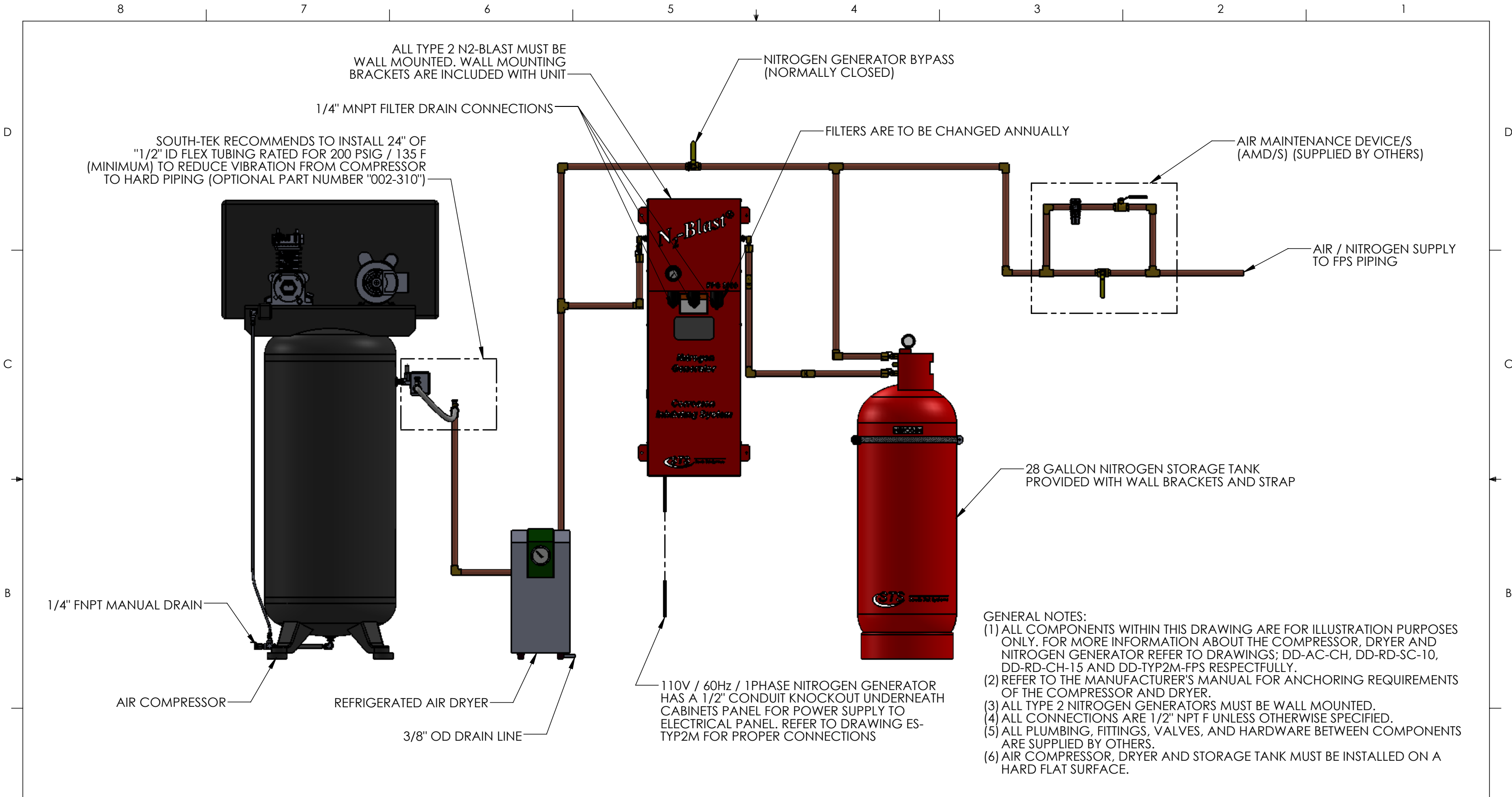
**N2-BLAST, TYPE 2, GENERAL
ARRANGEMENT WITH (CH) VERTICAL
COMPRESSOR AND REFRIGERATED AIR
DRYER, TABLE OF CONTENTS**

PROJECT NAME:
SOUTH-TEK SYSTEMS

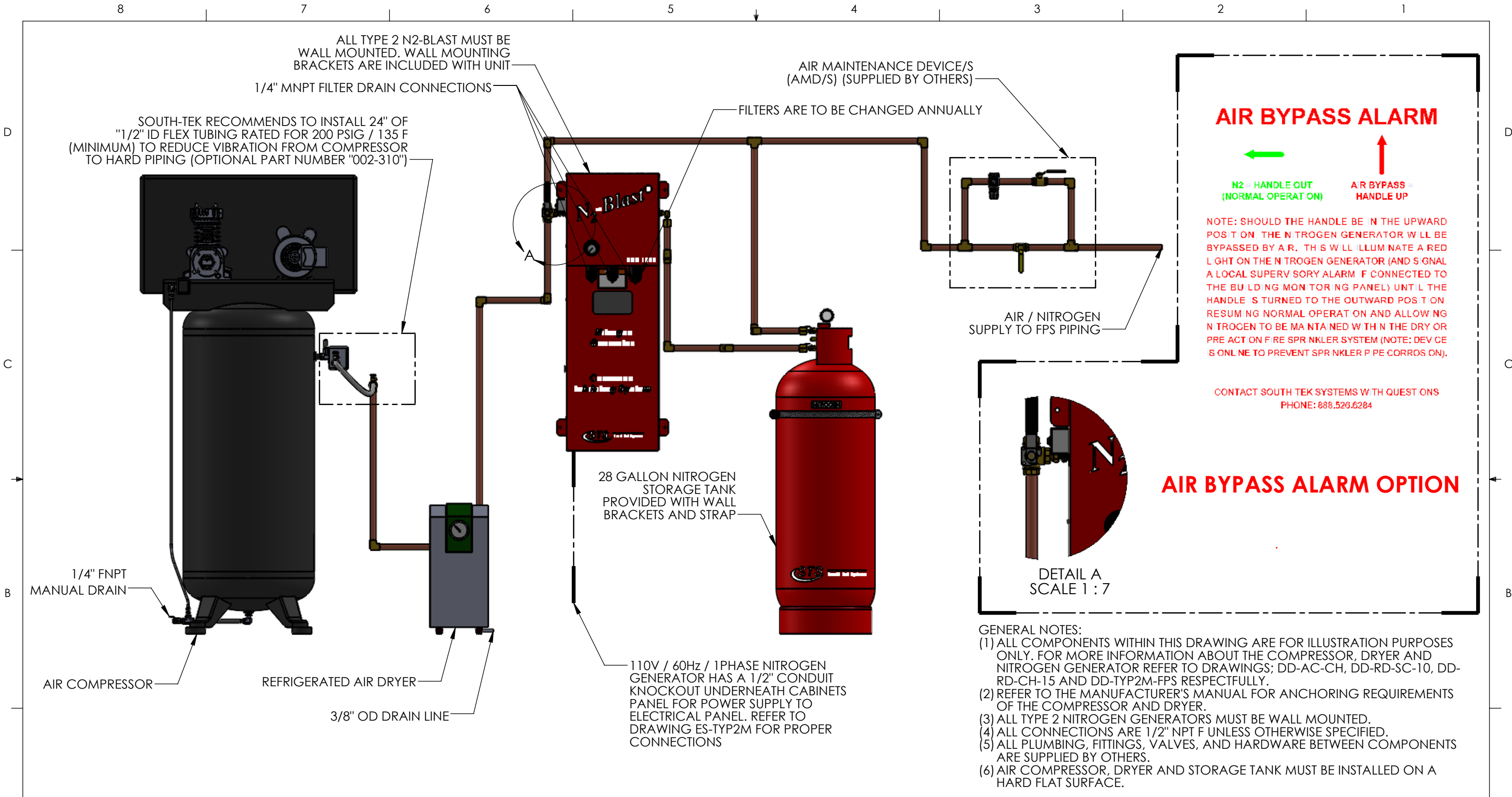
GA-TYP2M-CH

DRAWN: PJS	APPROVED: JVN
DATE: 11/28/14	DATE: 11/28/14
SCALE: 1:18	SHEET: 1 OF 3

2

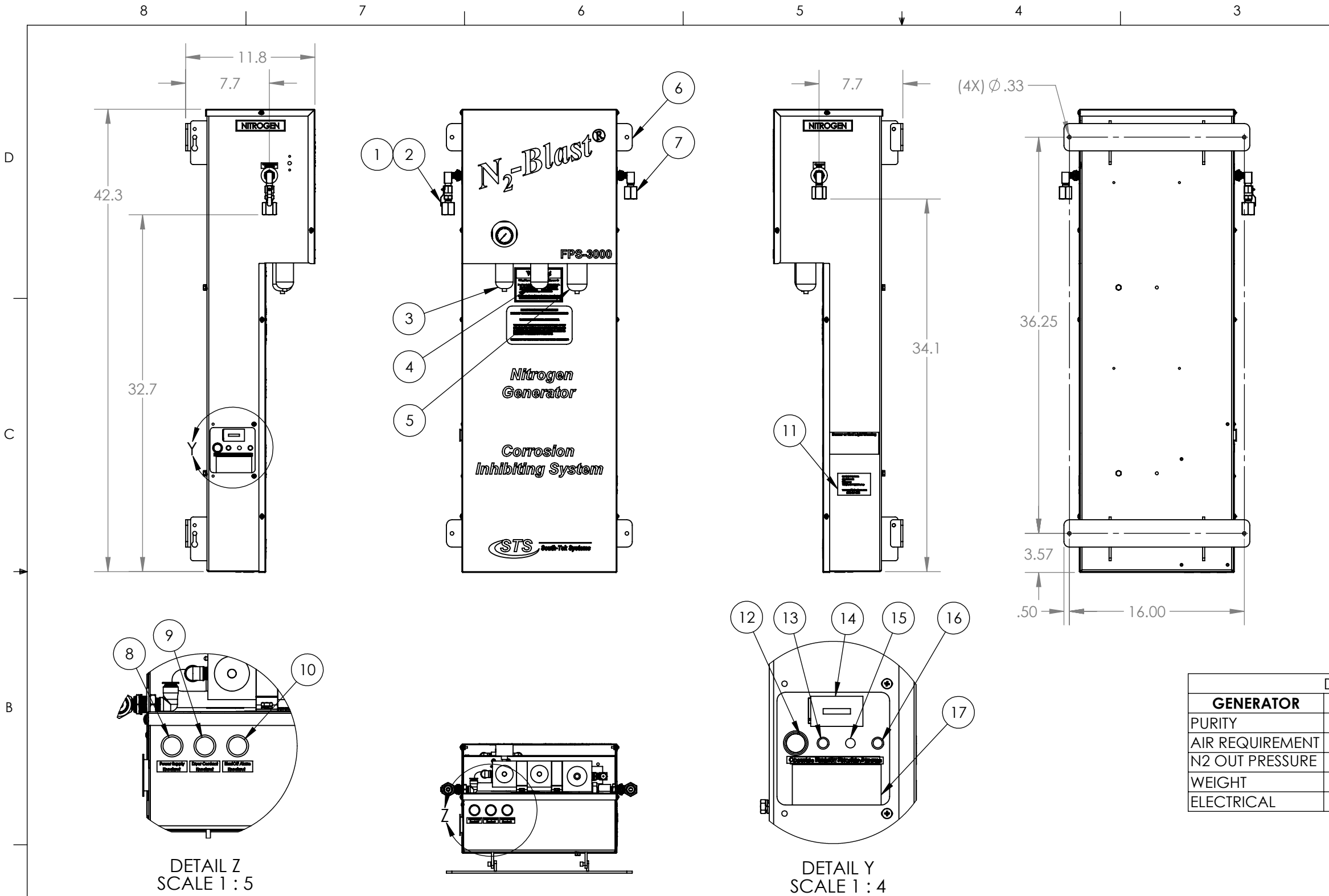


							MATERIAL:	N2-BLAST, TYPE 2, GENERAL ARRANGEMENT WITH (CH) VERTICAL COMPRESSOR AND REFRIGERATED AIR DRYER		DRAWN: PJS	APPROVED: JVN
							FINISH:			DATE: 11/28/14	DATE: 11/28/14
							WEIGHT:	PROJECT NAME: SOUTH-TEK SYSTEMS	SIZE: B	SCALE: 1:14	SHEET: 2 OF 3
							NUMBER: GA-TYP2M-CH		REVISION: 2		
ALL	-	2	UPDATED TITLE BLOCK AND TEXT FORMAT	7/22/2015	PJS	JVN	<small>PROPRIETARY AND CONFIDENTIAL THE INFORMATION CONTAINED IN THIS DRAWING IS THE SOLE PROPERTY OF SOUTH-TEK SYSTEMS. ANY REPRODUCTION IN PART OR AS A WHOLE WITHOUT THE WRITTEN PERMISSION OF SOUTH-TEK SYSTEMS IS PROHIBITED.</small>				
2-3	-	1	UPDATED COMPRESSOR	6/1/2015	PJS	JVN	<small>UNLESS OTHERWISE SPECIFIED DIMENSIONS ARE IN INCHES WHOLE NUMBER DIM's: ± 1 ONE DEC.: ± .2, TWO DEC.: ± .02 THREE DEC.: ± .005, ANG.: ± .05°</small>				
DRAWING	ECR	REV.	DESCRIPTION	DATE	CHANGED BY	APPROVED BY	REVISIONS				



- GENERAL NOTES:
- (1) ALL COMPONENTS WITHIN THIS DRAWING ARE FOR ILLUSTRATION PURPOSES ONLY. FOR MORE INFORMATION ABOUT THE COMPRESSOR, DRYER AND NITROGEN GENERATOR REFER TO DRAWINGS; DD-AC-CH, DD-RD-SC-10, DD-RD-CH-15 AND DD-TYP2M-FPS RESPECTFULLY.
 - (2) REFER TO THE MANUFACTURER'S MANUAL FOR ANCHORING REQUIREMENTS OF THE COMPRESSOR AND DRYER.
 - (3) ALL TYPE 2 NITROGEN GENERATORS MUST BE WALL MOUNTED.
 - (4) ALL CONNECTIONS ARE 1/2" NPT UNLESS OTHERWISE SPECIFIED.
 - (5) ALL PLUMBING, FITTINGS, VALVES, AND HARDWARE BETWEEN COMPONENTS ARE SUPPLIED BY OTHERS.
 - (6) AIR COMPRESSOR, DRYER AND STORAGE TANK MUST BE INSTALLED ON A HARD FLAT SURFACE.

							MATERIAL:		N2-BLAST, TYPE 2, GENERAL ARRANGEMENT WITH (CH) VERTICAL COMPRESSOR AND REFRIGERATED AIR DRYER AND AIR BYPASS		DRAWN:	APPROVED:																					
							FINISH:				PJS	JVN																					
<small>PROPRIETARY AND CONFIDENTIAL THE INFORMATION CONTAINED IN THIS DRAWING IS THE SOLE PROPERTY OF SOUTH-TEK SYSTEMS. ANY REPRODUCTION IN PART OR AS A WHOLE WITHOUT THE WRITTEN PERMISSION OF SOUTH-TEK SYSTEMS IS PROHIBITED.</small>							WEIGHT:		PROJECT NAME:		DATE:	DATE:																					
							UNLESS OTHERWISE SPECIFIED DIMENSIONS ARE IN INCHES WHOLE NUMBER DIM'S: ± .1 ONE DEC.: ± .02, TWO DEC.: ± .02 THREE DEC.: ± .005, ANG.: ± .05°		SOUTH-TEK SYSTEMS		11/28/14	11/28/14																					
<table border="1" style="width: 100%; border-collapse: collapse;"> <thead> <tr> <th>DRAWING</th> <th>ECR</th> <th>REV.</th> <th>DESCRIPTION</th> <th>DATE</th> <th>CHANGED BY</th> <th>APPROVED BY</th> </tr> </thead> <tbody> <tr> <td>ALL</td> <td>-</td> <td>2</td> <td>UPDATED TITLE BLOCK AND TEXT FORMAT</td> <td>7/22/2015</td> <td>PJS</td> <td>JVN</td> </tr> <tr> <td>2-3</td> <td>-</td> <td>1</td> <td>UPDATED COMPRESSOR</td> <td>6/1/2015</td> <td>PJS</td> <td>JVN</td> </tr> </tbody> </table>							DRAWING	ECR	REV.	DESCRIPTION	DATE	CHANGED BY	APPROVED BY	ALL	-	2	UPDATED TITLE BLOCK AND TEXT FORMAT	7/22/2015	PJS	JVN	2-3	-	1	UPDATED COMPRESSOR	6/1/2015	PJS	JVN	NUMBER:		SIZE:		SCALE:	SHEET:
DRAWING	ECR	REV.	DESCRIPTION	DATE	CHANGED BY	APPROVED BY																											
ALL	-	2	UPDATED TITLE BLOCK AND TEXT FORMAT	7/22/2015	PJS	JVN																											
2-3	-	1	UPDATED COMPRESSOR	6/1/2015	PJS	JVN																											
REVISIONS							SOUTH-TEK SYSTEMS		B		1:14	3 OF 3																					
							<div style="font-size: 2em; font-weight: bold; text-align: center;">GA-TYP2M-CH</div>				REVISION:																						
											2																						



EXTERNAL COMPONENTS	
ITEM #	DESCRIPTION
1	1/4" NPT M x F MINI BALL VALVE
2	1/2" NPT F x 1/4" NPT M REDUCER
3	PARTICULATE FILTER / REGULATOR COMBO
4	COALESCING FILTER
5	ABSORBING FILTER
6	WALL MOUNT BRACKET
7	1/2" NPT F x 1/4" NPT M REDUCER
8	POWER SUPPLY KNOCKOUT FOR 1/2" CONDUIT
9	DRYER CONTACT KNOCKOUT FOR 1/2" CONDUIT
10	BLASTOFF LED LIGHT , 24V
11	SERIAL NUMBER LABEL
12	POWER ON/OFF ROCKER SWITCH
13	BLASTOFF ALARM KNOCKOUT FOR 1/2" CONDUIT
14	HOUR METER
15	STANDBY LED LIGHT, 24V
16	OPTIONAL AIR BYPASS LIGHT KNOCKOUT
17	UL 508A OPEN INDUSTRIAL CONTROL PANEL LABEL



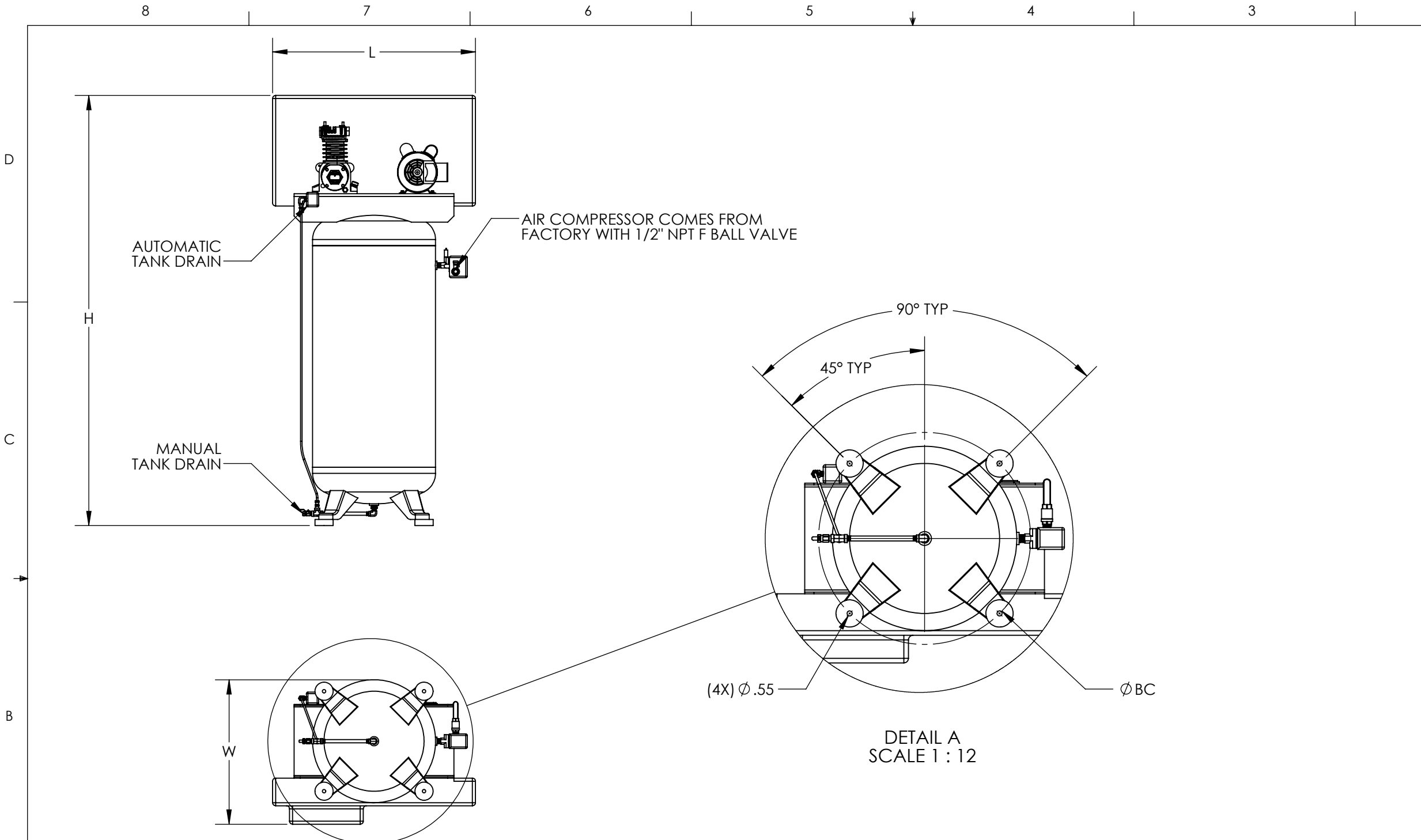
(FRP-002) FILTER REPLACEMENT KIT		
STS PART #	DESCRIPTION	QTY
524-137	PARTICULATE FILTER ELEMENT	1
524-138	COALESCING FILTER ELEMENT	1
524-139	ABSORBING FILTER ELEMENT	1

DESIGN DATA FOR N2-BLAST TYPE 2 SYSTEMS			
GENERATOR	FPS-1750	FPS-3000	FPS-6000
PURITY	98%		
AIR REQUIREMENT	3.2 SCFM @ 125 PSI	6.0 SCFM @ 125 PSI	10.5 SCFM @ 125 PSI
N2 OUT PRESSURE	Up to 80 psi		
WEIGHT	80 LBS	81 LBS	82 LBS
ELECTRICAL	110V / 60Hz / 1PHASE, 8AMPS		

DRAWING	ECR#	REV.	DESCRIPTION	DATE	CHANGED BY	APPROVED BY
-	-	2	UPDATED TITLE BLOCK, ADDED BACK VIEW WITH MOUNTING PATTERN DIMS	7/22/2015	PJS	JVN
-	-	1	ADDED FRP KIT INFORMATION	6/3/2015	PJS	JVN

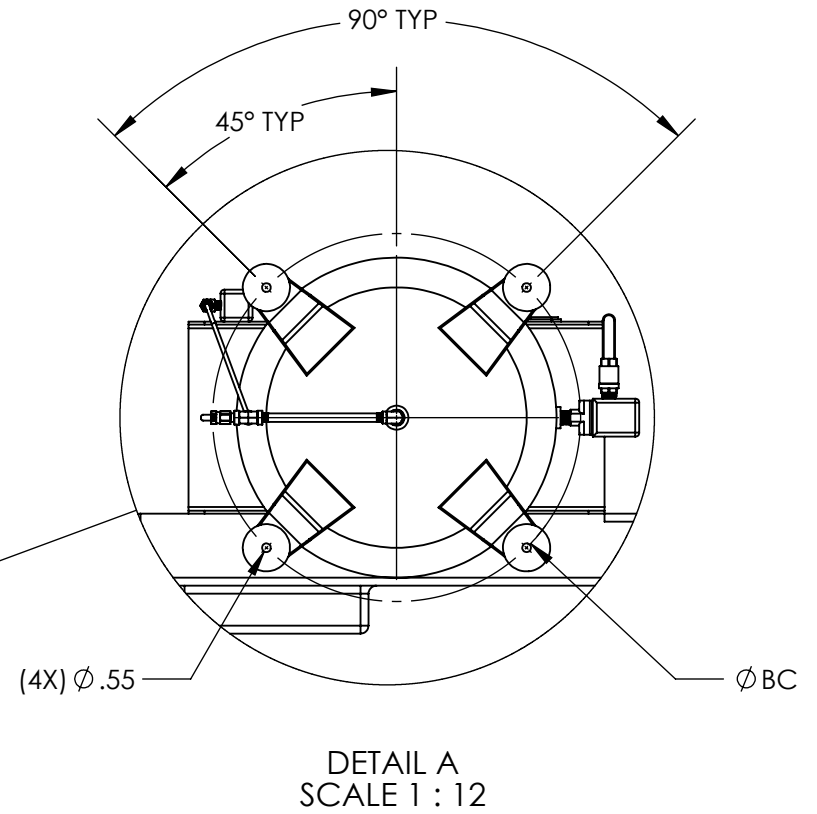


MATERIAL:	N2-BLAST, TYPE 2, DESIGN DATA AND DIMENSIONS PROJECT NAME: SOUTH-TEK SYSTEMS SIZE: B NUMBER: DD-TYP2M-FPS	DRAWN: PJS	APPROVED: JVN
FINISH:		DATE: 11/28/14	DATE: 11/28/14
WEIGHT:		SCALE: 1:10	SHEET: 1 OF 1
UNLESS OTHERWISE SPECIFIED DIMENSIONS ARE IN INCHES WHOLE NUMBER DIM'S: ± .1 ONE DEC.: ± .2, TWO DEC.: ± .02 THREE DEC.: ± .005, ANG.: ± .05°		REVISION: 2	



ELECTRICAL SELECTION TABLE	
STS-NF-C-4-CH AVAILABLE ELECTRICAL OPTIONS	
120V / 60Hz / 1PHASE, 32AMPS	
208V / 60Hz / 1PHASE, 16.8AMPS	
230V / 60Hz / 1PHASE, 16AMPS	
208V / 60Hz / 3PHASE, 8.5AMPS	
230V / 60Hz / 3PHASE, 8AMPS	
460V / 60Hz / 3PHASE, 4AMPS	
STS-NF-C-5-CH AVAILABLE ELECTRICAL OPTIONS	
208V / 60Hz / 1PHASE, 25.5AMPS	
230V / 60Hz / 1PHASE, 24AMPS	
208V / 60Hz / 3PHASE, 14.8AMPS	
230V / 60Hz / 3PHASE, 14AMPS	
460V / 60Hz / 3PHASE, 7AMPS	
STS-NF-C-6-CH AVAILABLE ELECTRICAL OPTIONS	
208V / 60Hz / 1PHASE, 33AMPS	
230V / 60Hz / 1PHASE, 31AMPS	
208V / 60Hz / 3PHASE, 23AMPS	
230V / 60Hz / 3PHASE, 22AMPS	
460V / 60Hz / 3PHASE, 11AMPS	
STS-NF-C-7-CH AVAILABLE ELECTRICAL OPTIONS	
200V / 60Hz / 3PHASE, 30AMPS	
230V / 60Hz / 3PHASE, 28AMPS	
460V / 60Hz / 3PHASE, 14AMPS	

STS-NF-C-4-CH AIR COMPRESSOR	
MOTOR	3 HP
AIR FLOW MAX	10.9 SCFM @ 175 PSI
ELECTRICAL	SEE AVAILABLE OPTIONS
DIMENSIONS	76H X 30.5L X 24W X 23BC
WEIGHT	425 LBS
STS-NF-C-5-CH AIR COMPRESSOR	
MOTOR	5 HP
AIR FLOW MAX	17.3 SCFM @ 175 psi
ELECTRICAL	SEE AVAILABLE OPTIONS
DIMENSIONS	75.5H X 33.38L X 24.75W X 25.5BC
WEIGHT	565 LBS
STS-NF-C-6-CH AIR COMPRESSOR	
MOTOR	7.5 HP
AIR FLOW MAX	23.1 SCFM @ 175 PSI
ELECTRICAL	SEE AVAILABLE OPTIONS
DIMENSIONS	75.5H X 34L X 25.75W X 25.5BC
WEIGHT	545 LBS
STS-NF-C-7-CH AIR COMPRESSOR	
MOTOR	10 HP
AIR FLOW MAX	34.8 @ 175 PSI
ELECTRICAL	SEE AVAILABLE OPTIONS
DIMENSIONS	80.75H X 30L X 43.38W X 28BC
WEIGHT	890 LBS

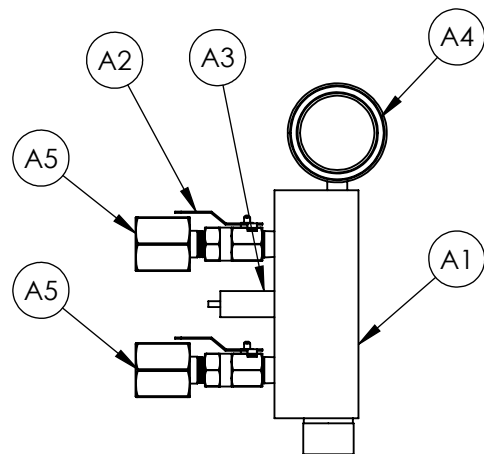


DRAWING	ECR#	REV.	DESCRIPTION	DATE	CHANGED BY	APPROVED BY
-	-	3	CHANGED TITLE BLOCK AND UPDATED COMPRESSOR TABLE	7/21/2015	PJS	JVN
-	-	2	UPDATED COMPRESSOR TABLE	6/19/2015	PJS	JVN
-	-	1	UPDATED ELECTRICAL SELECTION TABLE	6/2/2015	PJS	JVN
REVISIONS						

PROPRIETARY AND CONFIDENTIAL
 THE INFORMATION CONTAINED IN THIS DRAWING IS THE SOLE PROPERTY OF SOUTH-TEK SYSTEMS. ANY REPRODUCTION IN PART OR AS A WHOLE WITHOUT THE WRITTEN PERMISSION OF SOUTH-TEK SYSTEMS IS PROHIBITED.

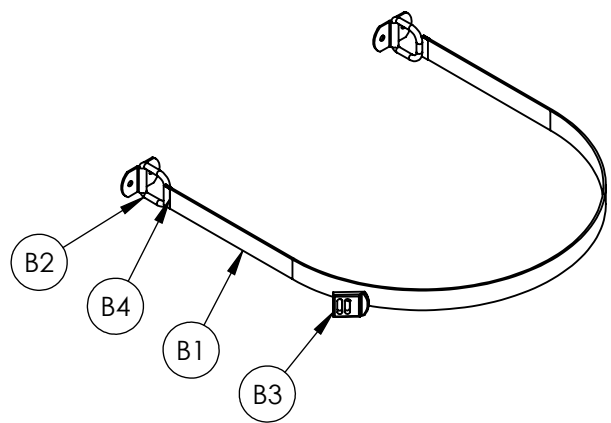
MATERIAL:	(CH) VERTICAL COMPRESSOR DESIGN DATA AND DIMENSIONS		DRAWN:	APPROVED:
FINISH:			PJS	JVN
WEIGHT:			DATE:	DATE:
PROJECT NAME:		SOUTH-TEK SYSTEMS	SCALE:	SHEET:
NUMBER:		DD-AC-CH	1:18	1 OF 1
			REVISION:	3

A01-0100-S-A, TANK MANIFOLD WITH 0.500" NOZZLE CONNECTIONS			
ITEM #	STS PART #	DESCRIPTION	QTY.
A1	800-245-A	TANK MANIFOLD	1
A2	124-308	0.250" NPT M x F BALL VALVE, BRASS, MINIATURE	2
A3	124-335-A	0.250" SAFETY RELIEF, 115 PSI, UCI	1
A4	124-125	0.250" NPT x 02.000" O-160 PSIG, BM	1
A5	524-218	0.500" NPT F x 0.250" NPT M REDUCER, BRASS	2



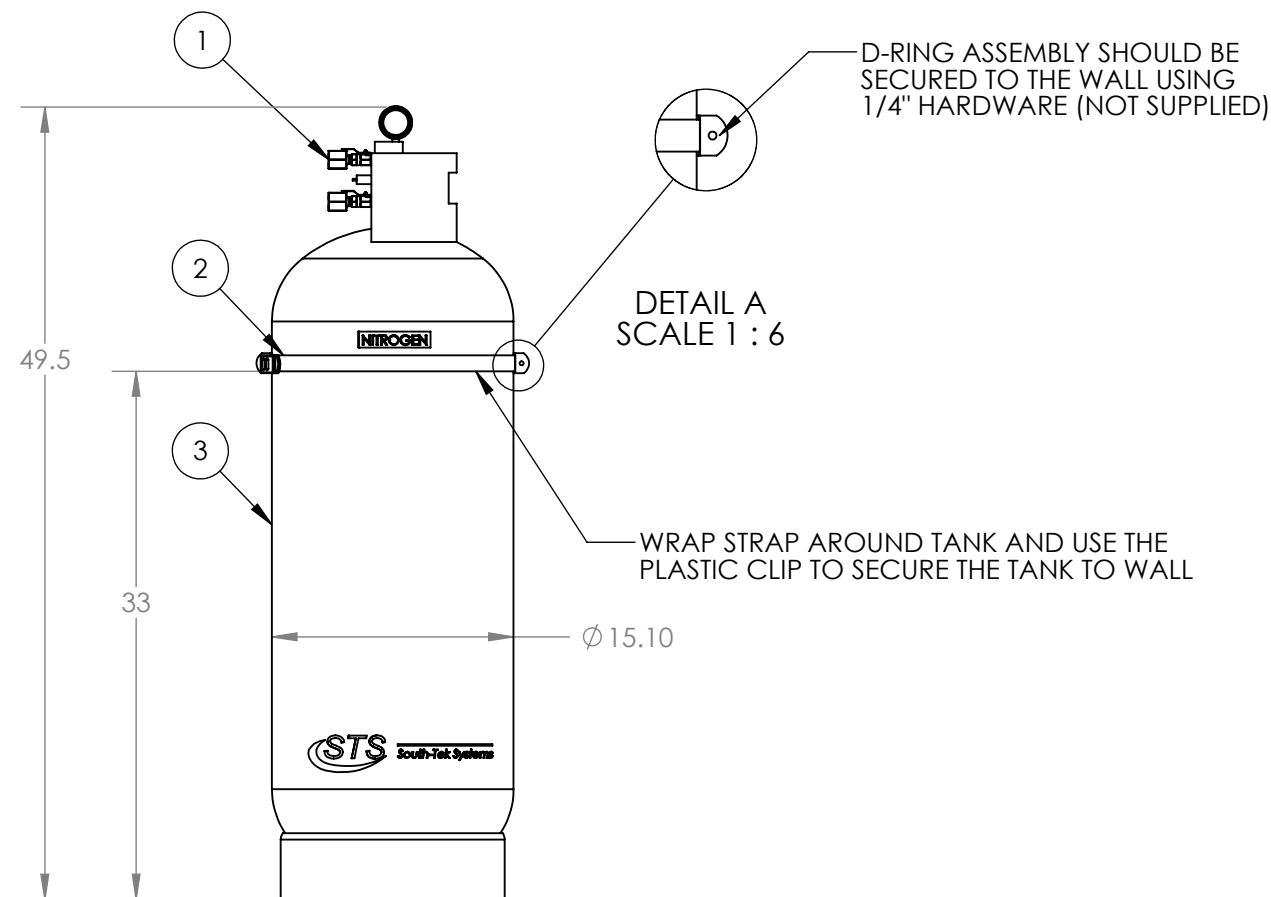
SCALE 1 : 4

A01-0100-A, 100# Tank Strap Assembly			
ITEM #	STS PART #	DESCRIPTION	QTY.
B1	800-155	TANK STRAP	1
B2	800-157	D-RING ASSEMBLY	2
B3	800-154	LIGHT DUTY PLASTIC BUCKLE	1
B4	800-156	FINISHING TIP	2



SCALE 1 : 8

DD-A01-0100-04-04, INCLUDED ASSEMBLIES			
ITEM #	STS PART #	DESCRIPTION	QTY.
1	A01-0100-S-A	TANK MANIFOLD WITH 0.500" NOZZLES	1
2	A01-0100-A	TANK STRAP ASSEMBLY	1
3	800-111-FPS	100# RED TANK WITH LABEL	1



(800-111) NITROGEN STORAGE TANK DESIGN DATA	
VOLUME	28 GALLONS
WEIGHT	75 LBS



28 GALLON (100#) TANK ASSEMBLY DESIGN DATA

DRAWING	ECR	REV.	DESCRIPTION	DATE	CHANGED BY	APPROVED BY
-	-	1	UPDATED TITLE BLOCK AND TEXT FORMAT	7/22/2015	PJS	JVN
REVISIONS						

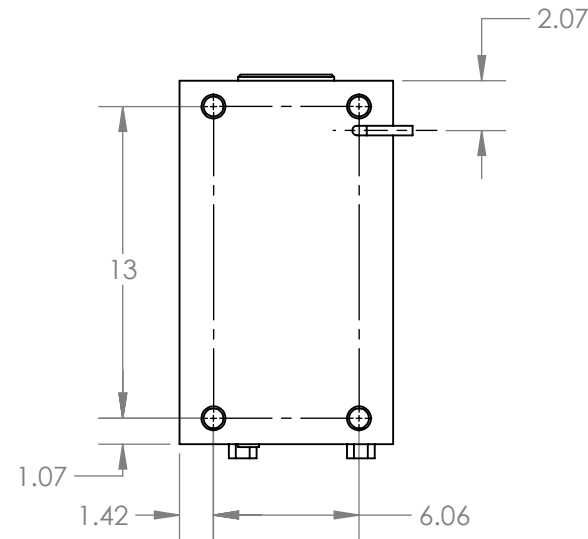
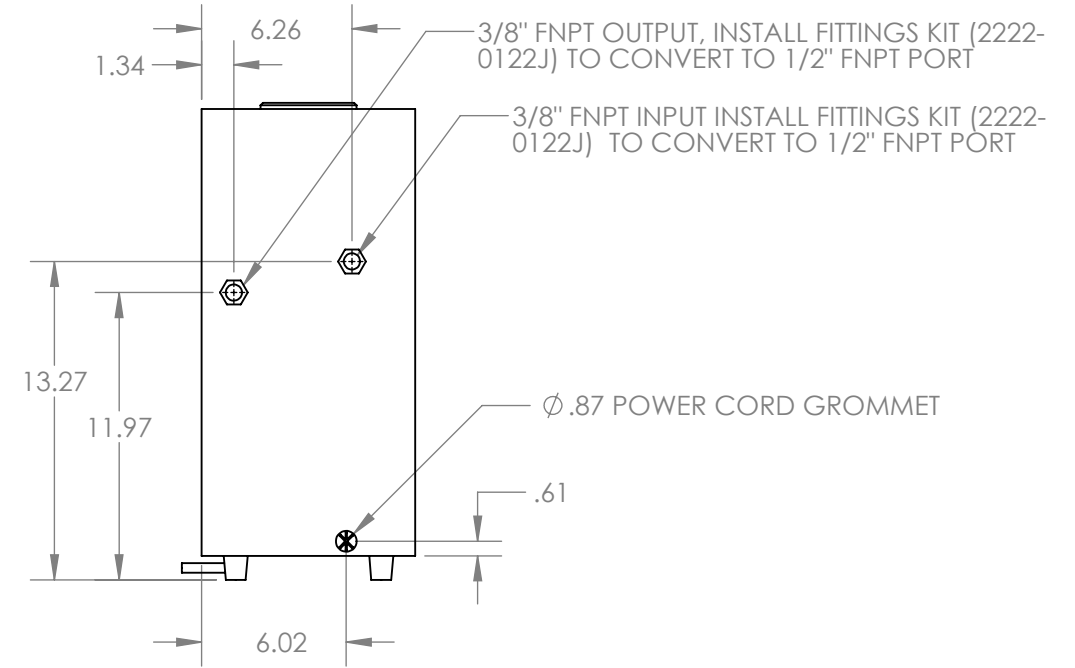
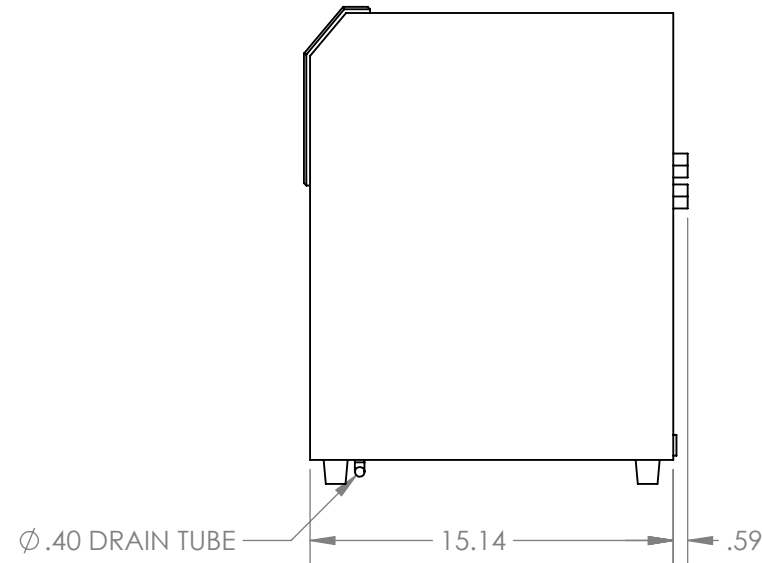
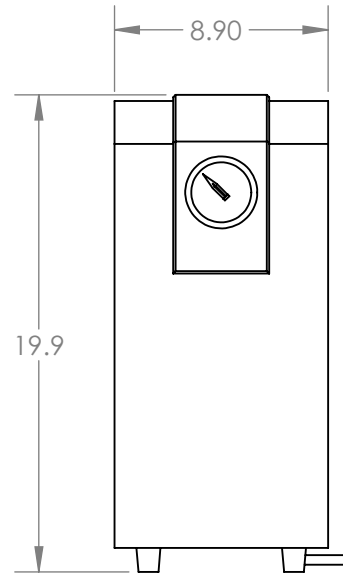
MATERIAL:	
FINISH:	
WEIGHT:	

PROJECT NAME:	SOUTH-TEK SYSTEMS	SIZE:	B	DRAWN:	PJS	APPROVED:	JVN
DATE:	12/03/14	SCALE:	1:12	DATE:	12/03/14	SHEET:	1 OF 1
NUMBER:	DD-A01-0100-04-04			REVISION:	1		

PROPRIETARY AND CONFIDENTIAL
THE INFORMATION CONTAINED IN THIS DRAWING IS THE SOLE PROPERTY OF SOUTH-TEK SYSTEMS. ANY REPRODUCTION IN PART OR AS A WHOLE WITHOUT THE WRITTEN PERMISSION OF SOUTH-TEK SYSTEMS IS PROHIBITED.

UNLESS OTHERWISE SPECIFIED DIMENSIONS ARE IN INCHES
WHOLE NUMBER DIM'S: ± .1
ONE DEC.: ± .02, TWO DEC.: ± .02
THREE DEC.: ± .005, ANG.: ± .05°

ITEM #	STS PART #	DESCRIPTION	QTY.
1	2222-0319	RD-10 AIR DRYER	1
2	2222-0122J (SEE NOTE 1)	RD-10 FITTINGS KIT	1



AIR DRYER DESIGN DATA	
ELECTRICAL	115V / 60Hz / 1PHASE, 11AMPS
FLOW RATE	10 SCFM
WEIGHT	40 LBS

NOTES:
 (1) FITTINGS KIT INCLUDES (2) 3/8" MNPT X 1/2" FNPT ADAPTERS.

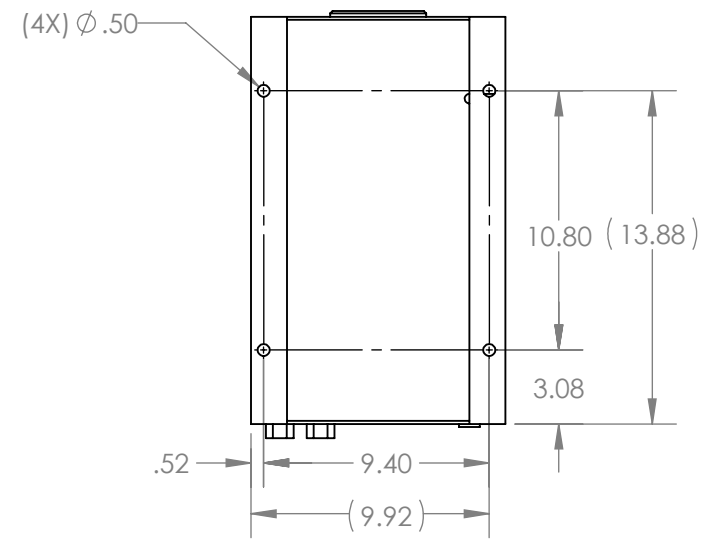
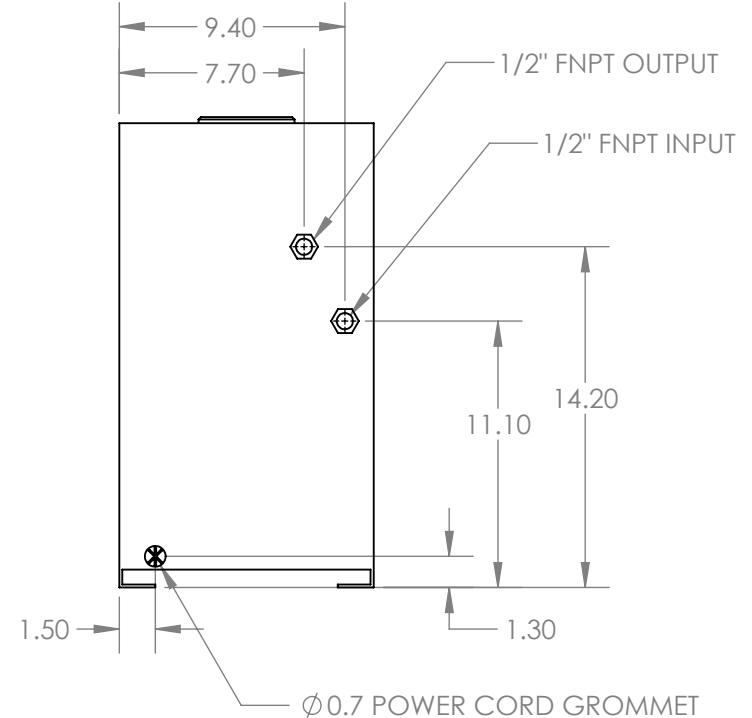
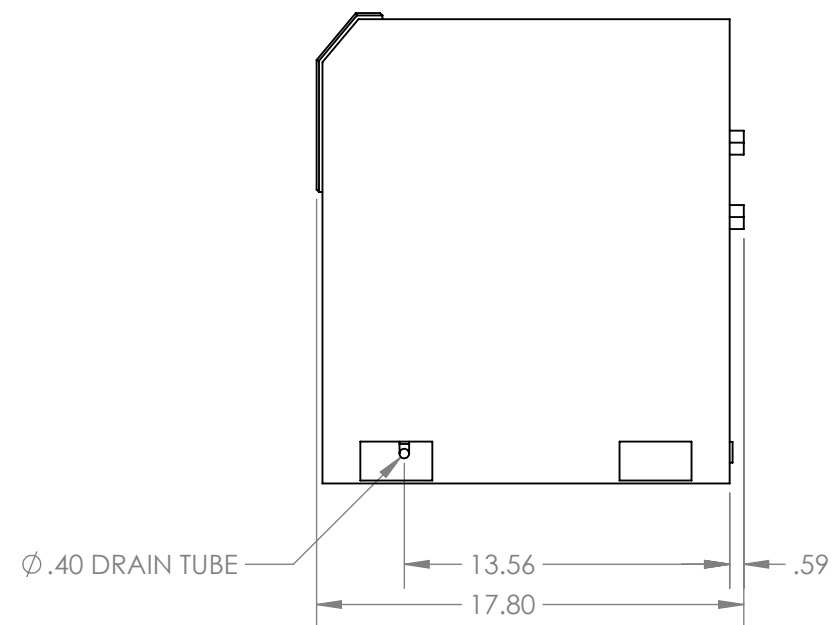
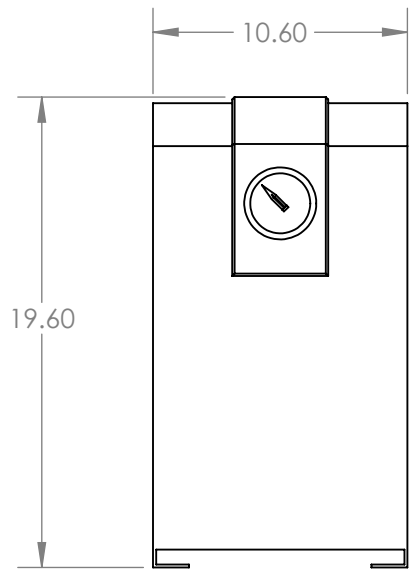
DRAWING	ECR#	REV.	DESCRIPTION	DATE	CHANGED BY	APPROVED BY
-	-	2	UPDATED TITLE BLOCK, TEXT FORMAT, AND ADDED CONNECTION KIT PART NUMBER	7/22/2015	PJS	JVN
-	-	1	UPDATED TITLE BLOCK	6/2/2015	PJS	JVN
REVISIONS						

South-Tek
SYSTEMS

PROPRIETARY AND CONFIDENTIAL
 THE INFORMATION CONTAINED IN THIS DRAWING IS THE SOLE PROPERTY OF SOUTH-TEK SYSTEMS. ANY REPRODUCTION IN PART OR AS A WHOLE WITHOUT THE WRITTEN PERMISSION OF SOUTH-TEK SYSTEMS IS PROHIBITED.

MATERIAL:	MODEL 10 REFRIGERATED AIR DRYER DESIGN DATA AND DIMENSIONS	DRAWN:	APPROVED:
FINISH:		PJS	JVN
WEIGHT:		DATE:	DATE:
PROJECT NAME:		SIZE:	SCALE:
SOUTH-TEK SYSTEMS		B	1:8
NUMBER:		SHEET:	
DD-RD-SC-10		1 OF 1	
			REVISION:
			2

ITEM #	STS PART #	DESCRIPTION	QTY.
1	2222-0436	RD-15 AIR DRYER	1



AIR DRYER DESIGN DATA	
ELECTRICAL	115V / 60Hz / 1PHASE, 13AMPS
FLOW RATE	15 SCFM
WEIGHT	55 LBS

DRAWING	ECR	REV.	DESCRIPTION	DATE	CHANGED BY	APPROVED BY
-	-	0	INITIAL RELEASE	7/28/2015	PJS	JVN
REVISIONS						



MATERIAL:
FINISH:
WEIGHT:

UNLESS OTHERWISE SPECIFIED
DIMENSIONS ARE IN INCHES
WHOLE NUMBER DIM'S: ± .1
ONE DEC.: ± .02, TWO DEC.: ± .02
THREE DEC.: ± .005, ANG.: ± .05°

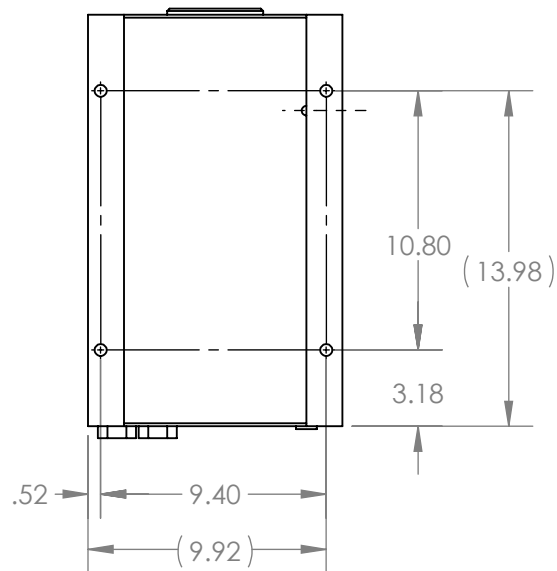
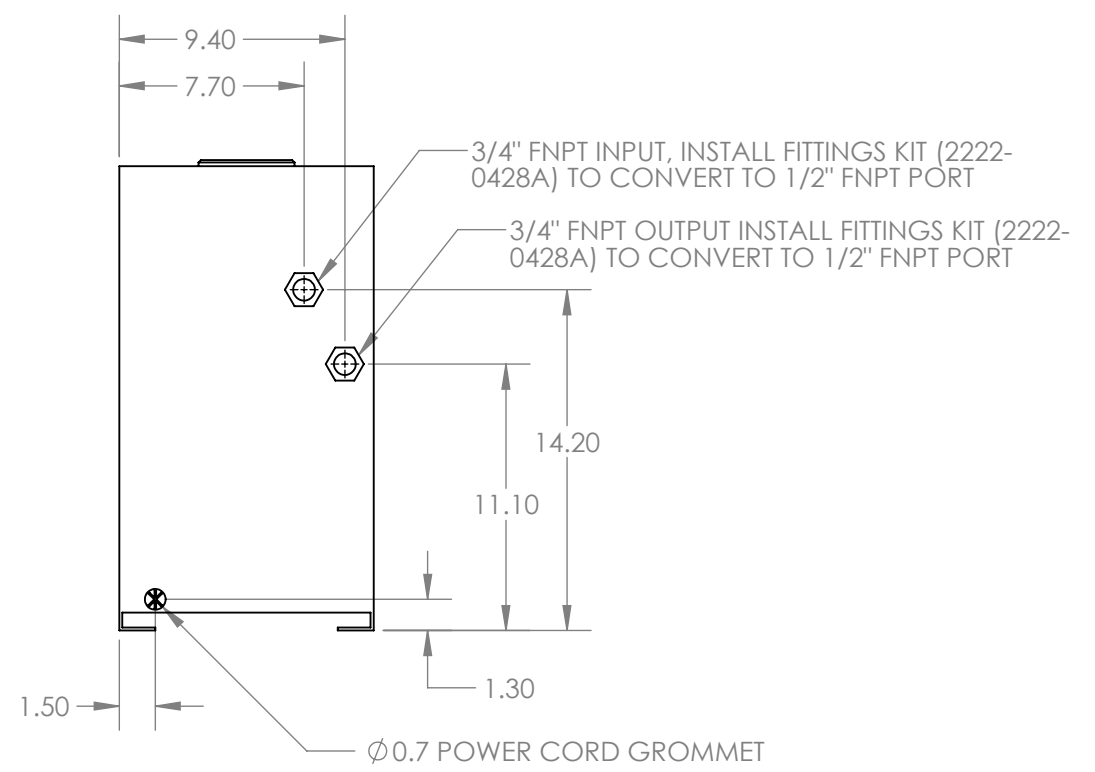
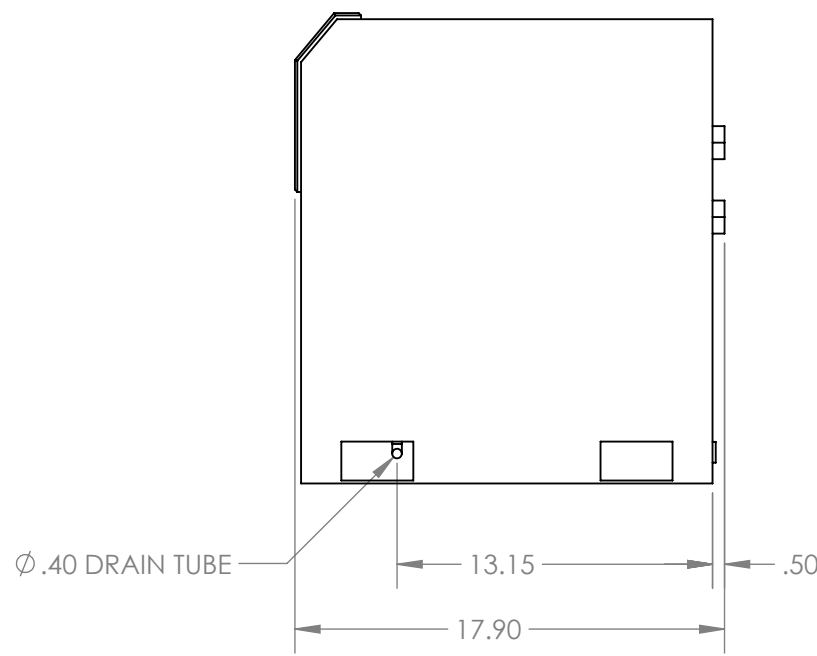
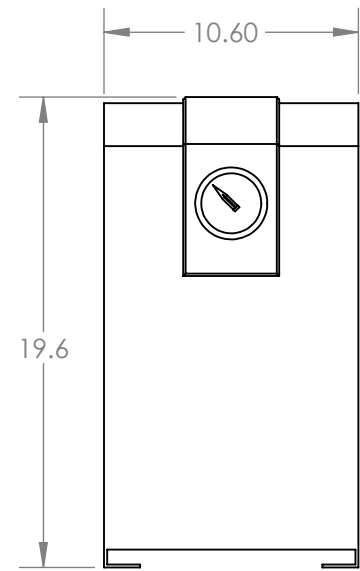
MODEL 15 REFRIGERATED AIR DRYER DESIGN DATA AND DIMENSIONS

PROJECT NAME: SOUTH-TEK SYSTEMS SIZE: B

NUMBER: **DD-RD-SC-15**

DRAWN: PJS APPROVED: JVN
DATE: 12/03/14 DATE: 12/03/14
SCALE: 1:8 SHEET: 1 OF 1
REVISION: **0**

ITEM #	STS PART #	DESCRIPTION	QTY.
1	2222-0428	SMC DRYER, RD-25	1
2	2222-0428A (SEE NOTE 1)	RD-25 FITTINGS KIT	1



AIR DRYER DESIGN DATA	
ELECTRICAL	115V / 60Hz / 1PHASE, 13AMPS
FLOW RATE	25 SCFM
WEIGHT	57 LBS

NOTES:
 (1) FITTINGS KIT INCLUDES (2) 3/4" MNPT X 1/2" FNPT BUSHINGS.

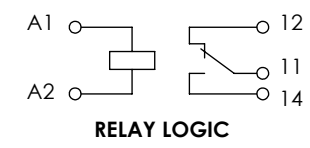
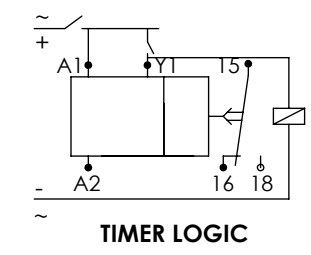
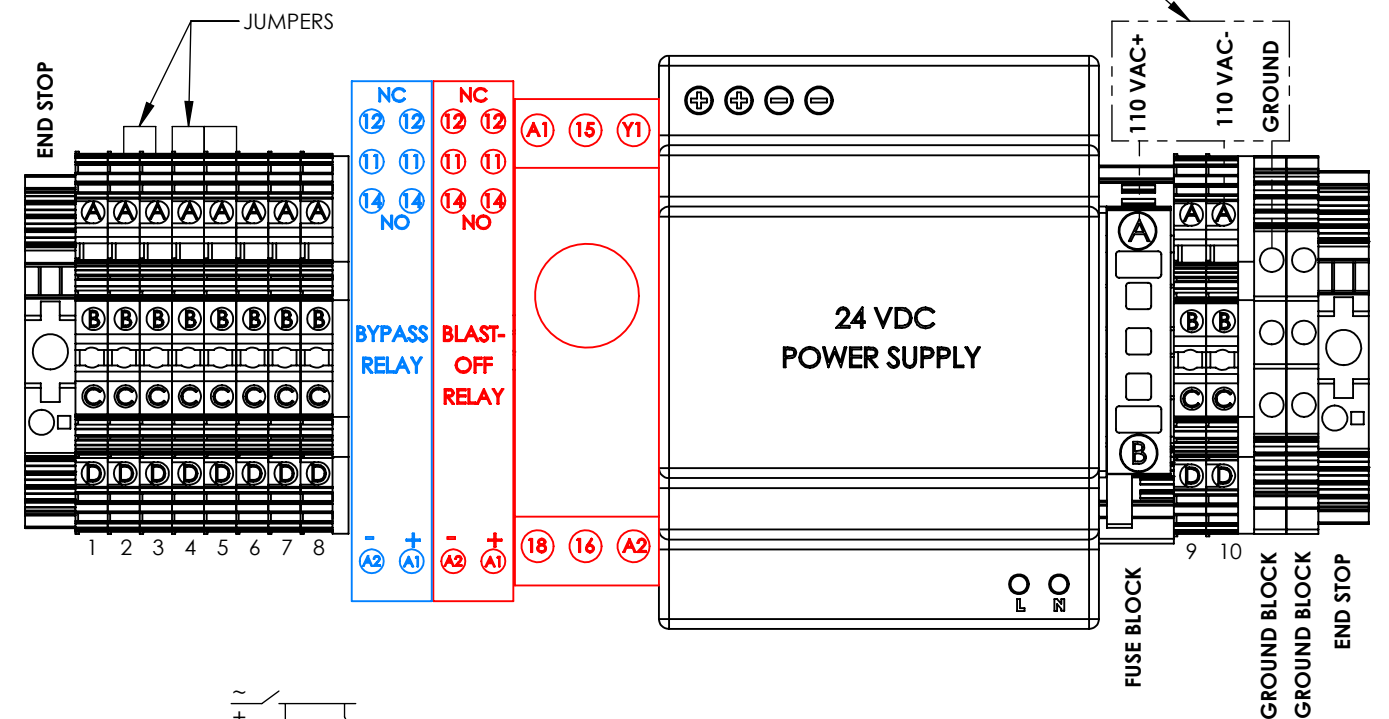
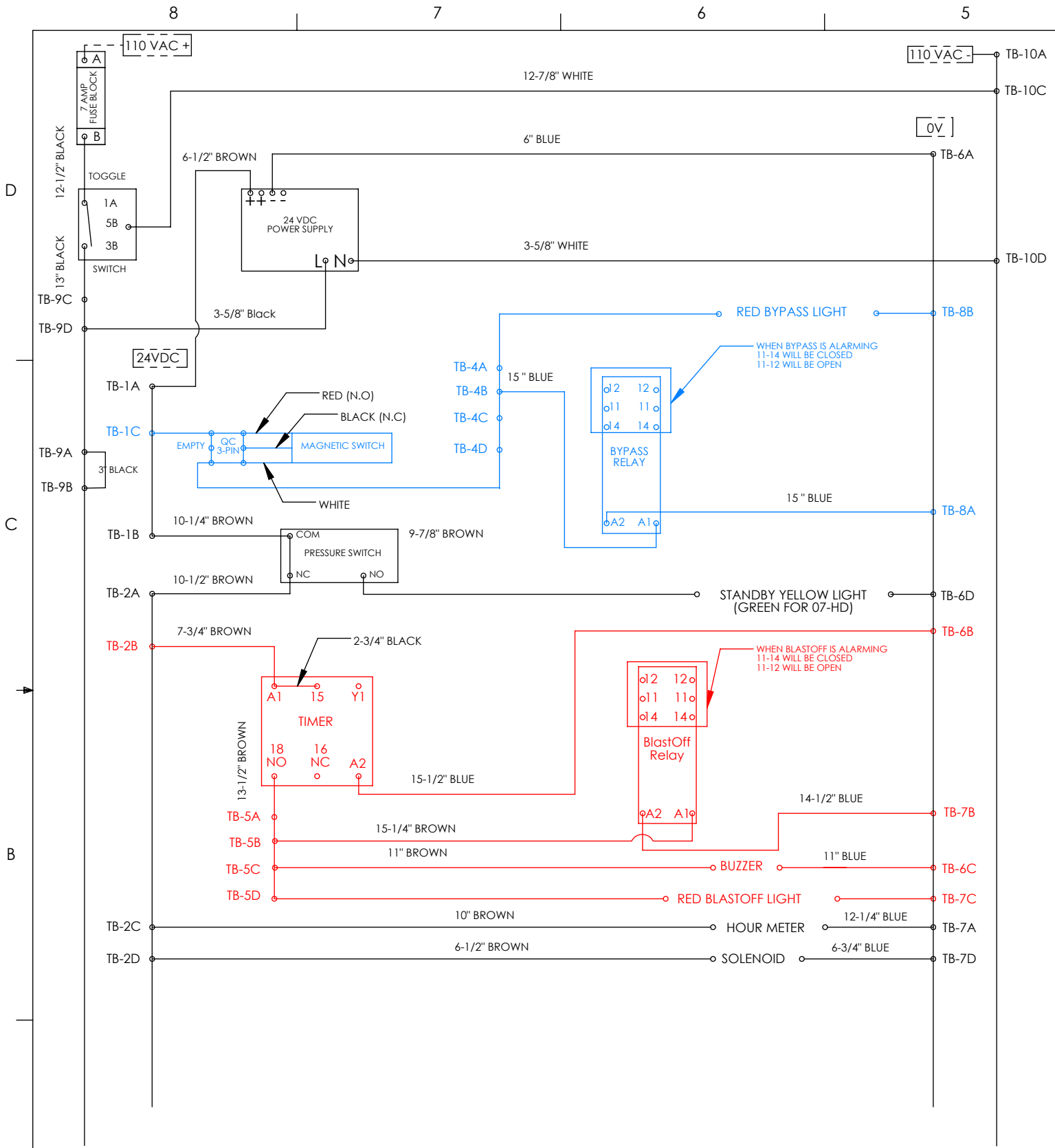
DRAWING	ECR	REV.	DESCRIPTION	DATE	CHANGED BY	APPROVED BY
-	-	0	INITIAL RELEASE	7/28/2015	PJS	JVN
REVISIONS						



MATERIAL:
 FINISH:
 WEIGHT:
 UNLESS OTHERWISE SPECIFIED DIMENSIONS ARE IN INCHES
 WHOLE NUMBER DIM'S: ± .1
 ONE DEC.: ± .02, TWO DEC.: ± .02
 THREE DEC.: ± .005, ANG.: ± .05°

MODEL 25 REFRIGERATED AIR DRYER DESIGN DATA AND DIMENSIONS
 PROJECT NAME: SOUTH-TEK SYSTEMS
 SIZE: B
 NUMBER: **DD-RD-SC-25**

DRAWN:	APPROVED:
PJS	JVN
DATE:	DATE:
12/03/14	12/03/14
SCALE:	SHEET:
1:8	1 OF 1
REVISION:	
0	



GENERAL NOTES:
 (1) ALL TERMINAL BLOCKS OPEN SIDE WILL FACE RIGHT, OR DOWN IN FINAL INSTALLATION POSITION.
 (2) BOTH GROUND BLOCKS OPEN SIDE WILL FACE LEFT.
 (3) ITEMS IN RED ARE FOR THE ELECTRICAL WIRING IF BLASTOFF ASSEMBLY IS INSTALLED "STS PART# - A00-TYP2M".
 (4) ITEMS IN BLUE ARE FOR THE ELECTRICAL WIRING IF BYPASS ASSEMBLY IS INSTALLED "STS PART# - TYP2M-N2-BP".

WIRING TABLE			
AWG	COLOR	SERVICE	FIELD/INTERNAL
14	CUST. DETERMINED	120 VAC	FIELD
14-16	BLACK	+120 VAC	INTERNAL
14-16	WHITE	-120 VAC	INTERNAL
16-18	BROWN	24 + VDC	INTERNAL
16-18	BLUE	0V	INTERNAL
16-18	YELLOW	SIGNAL	INTERNAL

TORQUE SPECIFICATIONS	
ITEM	MIN - MAX
TERMINAL BLOCK	0.4 Nm - 0.6 Nm
FUSE BLOCK	0.8 Nm - 1.6 Nm
GROUND BLOCK	0.4 Nm - 0.6 Nm
POWER SUPPLY	.67 Nm MAX

DRAWING	ECR#	REV.	DESCRIPTION	DATE	CHANGED BY	APPROVED BY
-	-	6	ADDED MAGNETIC SWITCH REMOVED COLD CLIMATE DRYER OPTION	8/21/2015	PJS	JVN
-	-	5	UPDATED TITLE BLOCK AND TEXT FORMAT	7/22/2015	PJS	JVN
-	-	1-4	OLDER REVS CONSOLIDATED AND FILED	7/22/2015	PJS	JVN
REVISIONS						

TYPE 2M, ELECTRICAL PANEL WIRING

ES-TYP2M

MATERIAL:

FINISH:

WEIGHT:

PROJECT NAME: SOUTH-TEK SYSTEMS

SIZE: B

SCALE: 2.5:3

NUMBER:

DRAWN: PJS

DATE: 08/29/14

APPROVED: JVN

DATE: 08/29/14

SHEET: 1 OF 1

REVISION: 6

PROPRIETARY AND CONFIDENTIAL
 THE INFORMATION CONTAINED IN THIS DRAWING IS THE SOLE PROPERTY OF SOUTH-TEK SYSTEMS. ANY REPRODUCTION IN PART OR AS A WHOLE WITHOUT THE WRITTEN PERMISSION OF SOUTH-TEK SYSTEMS IS PROHIBITED.
 UNLESS OTHERWISE SPECIFIED DIMENSIONS ARE IN INCHES
 WHOLE NUMBER DIM'S: ± .1
 ONE DEC.: ± .02, TWO DEC.: ± .02
 THREE DEC.: ± .005, ANG.: ± .05°